

Sage X3 |

22 March 2023

Sage



Agenda

Stay Updated

Sage X3 Strategy and Roadmap

Security Best Practices

Sage X3 Lifecycle Policy

How to upgrade Sage X3 seamlessly

Q&A

Customer feedback driving our strategy



Rapidly update
and adopt new
capabilities



Enhancing
security to
reduce security
breaches



Simpler and
easier
For all users



Deeper industry
capabilities and
solutions



Tailored Cloud
experiences and
services

Security vulnerabilities

Year 2020

1. Sage X3 security update for Syracuse component
2. Sage X3 – Critical security vulnerability (Syracuse hotfix)

Year 2021

1. MongoDB vulnerability: affects X3V11 with MongoDB 4.0 or 4.2
2. Apache Log4j vulnerability: affects X3V11 with Elasticsearch 7.9

Year 2022

1. Sage X3 security alert – ADMCA & ECOMM: affects X3V11 with legacy DB authentication and user ADMCA/ECOMM exists

Sage X3 | Technical components roadmap

2022 Release 1

February 2022

Replacement of Apache MongoDB 4.4

Updated Office plugin (using Edge)

Replacement of RTF text editor

Performance enhancement (export)

Delivery of Customization Audit tool

Security enhancements (Outlook connection)

Additional data integration templates

Data Hub integration step 2

2022 Release 2

May 2022

Azure Elastic Pools configuration

SQL Server Contained Databases

Security enhancements (2)

New email client for Sage X3 workflow (1)

Performance optimization

Replacement of Apache

2022 Release 3

August 2022

Replacement of RTF text editor

GraphQL API framework with extensibility (Beta)

Security enhancements (3)

New email client for Sage X3 workflow (2)

2022 Release 4

November 2022

New HTML rich text editor (Deprecation of RTF)

Security enhancements: Powershell

Secure attachments with a simplified experience

Azure Elastic Pools Support: X3 on-premise

Runtime 95: Enhanced stability and memory management

ATP: License management by concurrent sessions

Elasticsearch optional in Syracuse installation

Muti-thread folder import

Windows 2022 Server

2023 Release 1

April 2023

GraphQL API framework with extensibility (Alpha) (Sage X3 Extensibility Framework)

HTML email with Sage X3 workflow

Security enhancements: Powershell across the board

Support of Node.js 18









Cumulative Updates: Performance enhancements

Security: Default password & policy

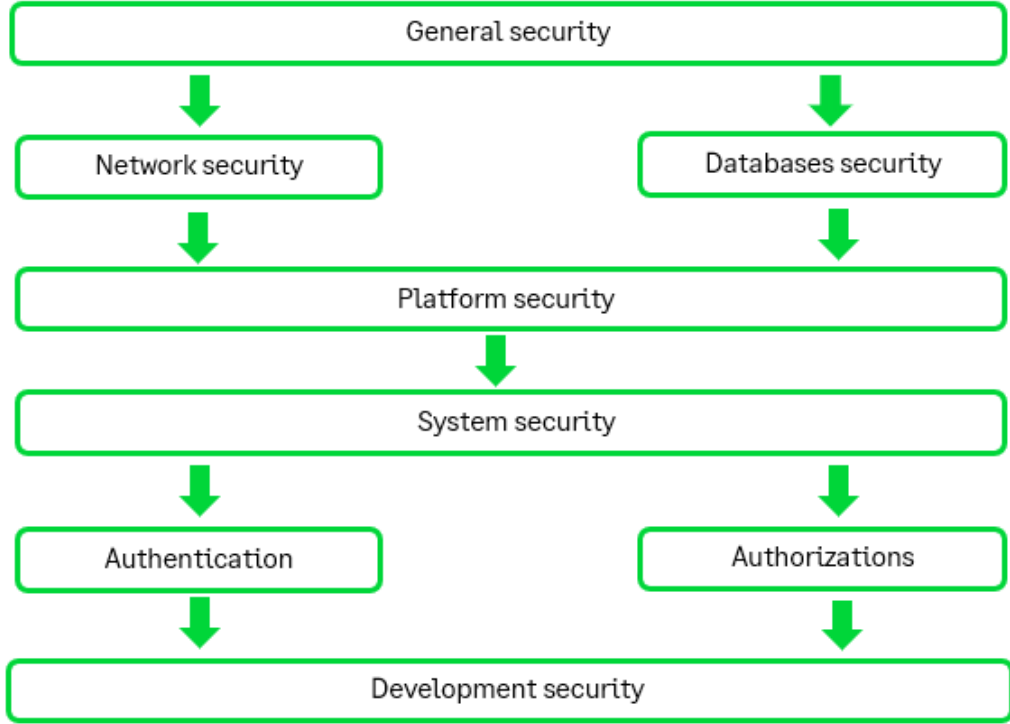
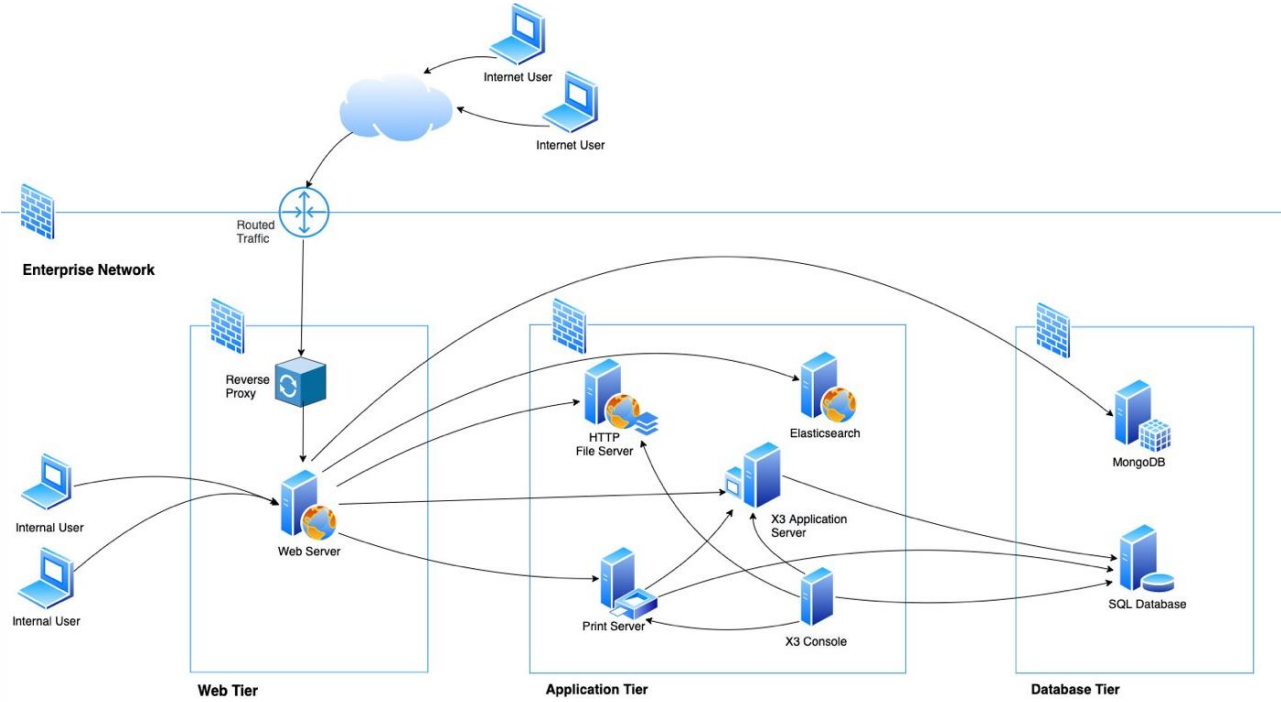
New Sage X3 Online Help

Technical components upgrade

Domain: Technology

	CURRENT	2023 R1	2023 R2	2024 R1
 Windows server	2022	2022		
 Red Hat	8.4			
 SQL Server	2019 SQL Server Elastic Pools		SQL Server 2022	
 Oracle	19c			
 MongoDB	4.4.10			
 Node.js	14	18	18	
 ElasticSearch	7.16	7.17		
 Crystal Reports	2016			
Browsers	Office plugin Edge-based			

Security Best Practices for Sage X3



Sage X3 Product Suite | Release roadmap

2022 Release 4

November 2022

2023 Release 1

April 2023

15-month backlog

Finance

- Bank Statement improvement
- VAT Framework improvement
- Query and mutation APIs

- Query and mutation APIs
- VAT Framework rollout #1 – Germany / Austria
- Beginning balances and transfers on Stock Valuation report

- AP/AR automation #1
- Sage Bank Feeds integration #1
- Query and mutation APIs

Operations

- Mobile Automation – LPN split / Stock count in blind mode / LPN displayed in pick ticket / Sound for success or errors
- API for e-commerce – Master data Query
- APIs for 3rd parties solution
- Mobile Automation enhancement
- Webscheduling: use of APIs (replace the current integration) - Beta
- Mobile Automation application for time sheet
- APIs for Planning & Resources – Mutation

- Mobile Automation application for time sheet – enter time through task assignments
- Mobile Automation – Create LPN on the fly in Purchase receipt and misc. receipt / Stock change improved / PO worksheet / View product picture / Scan using a smartphone or a tablet
- Scan a GS1 composite code for Purchase receipt (barcode, QR, Datamatrix)
- API - supplier invoice use case (Query)
- API for e-commerce – Master data (Mutation)
- Mobile Automation shop floor data collection: experiment
- Webscheduling: APIs integration (current scope)

- Mobile Automation – LPN managed in pick ticket process / Subcontract & Intersite transfers improved
- Mobile Automation – Shipment
- Scan a GS1 composite code for Stock change (barcode, QR, Datamatrix)
- Webscheduling scope extension
- Shop floor data collection

Manufacturing

- APIs for 3rd parties solution
- Mobile Automation enhancement
- Webscheduling: use of APIs (replace the current integration) - Beta

- Mobile Automation shop floor data collection: experiment
- Webscheduling: APIs integration (current scope)

- Mobile Automation Shop floor Data collection: basic delivery
- APIs for other use cases
- Webscheduling: APIs integration (scope extension)
- Mobile Automation Shop floor Data collection: scope extension
- webscheduling: APIs integration (scope extension enhancement)

Release calendar



Sage X3 Lifecycle Policy

Version 12

Current

Service Pack:

- Compliance updates for Sage core legislations
- New features, enhancements,
- Bug fixes

Hotfixes:

- Level 0 or Level 1 defects
- Subject to approval process

Standard

Hotfixes:

- Level 0 or Level 1 defects
- Subject to approval process

Extended

Hotfixes:

- Level 0 defects
- Subject to approval process

Assistance: Knowledge Base, online help, content

Sage X3 Lifecycle Policy

Sage X3 Lifecycle status for Version 11 and earlier

The table below identifies the key dates for when Sage X3 Versions 11, PU9, and earlier enter/entered Current, Standard and Extended Phases.

Version	Current	Standard	Extended	End of Maintenance
Sage X3 Version 11		1 July 2022	3 January 2022	1 April 2024*
Sage X3 Version PU9				1 July 2021
Earlier Versions of Sage X3				1 July 2020

Date indicates when a Version enters the Lifecycle stage.

*Sage has taken the decision to extend the current maintenance from 3rd April 2023 to 1st April 2024.

Upgrade Tool

Simplifying Upgrades



Automated Test Platform



Cumulative Patching



Customization Audit Tool

<ul style="list-style-type: none">✓ Quality Management✓ Regression Testing	<ul style="list-style-type: none">✓ Performance✓ Simplicity	<ul style="list-style-type: none">✓ Checks custom developments✓ Highlights risk level
---	--	--

Extending the power of your Sage X3 Add-on solution!



Sage Enterprise Intelligence

Sage Enterprise Intelligence (SEI) is a fully integrated business intelligence and data management solution that helps organizations make informed decisions based on enterprise-wide data. It empowers all users with simple, yet powerful interfaces to access and analyze data self-sufficiently.



Get decision support – quickly



Cut through the noise



Give others the power to analyze data, too



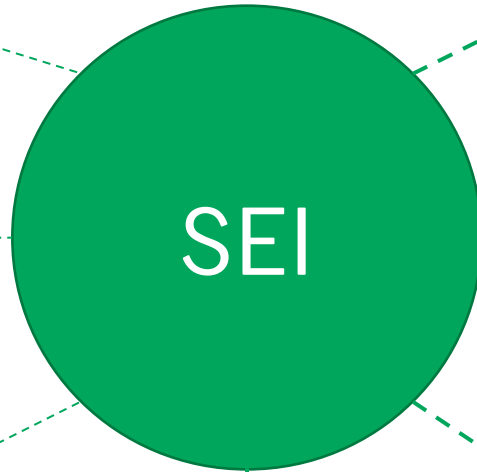
Share and collaborate with ease

All your data in one platform.

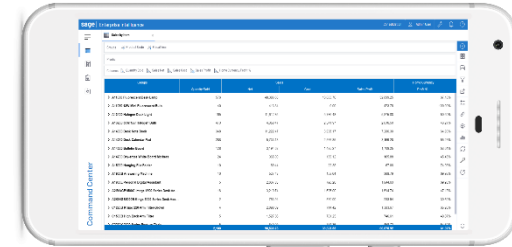
Sage X3

Sage 300

Sage CRM



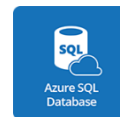
Financial



Sales



CRM

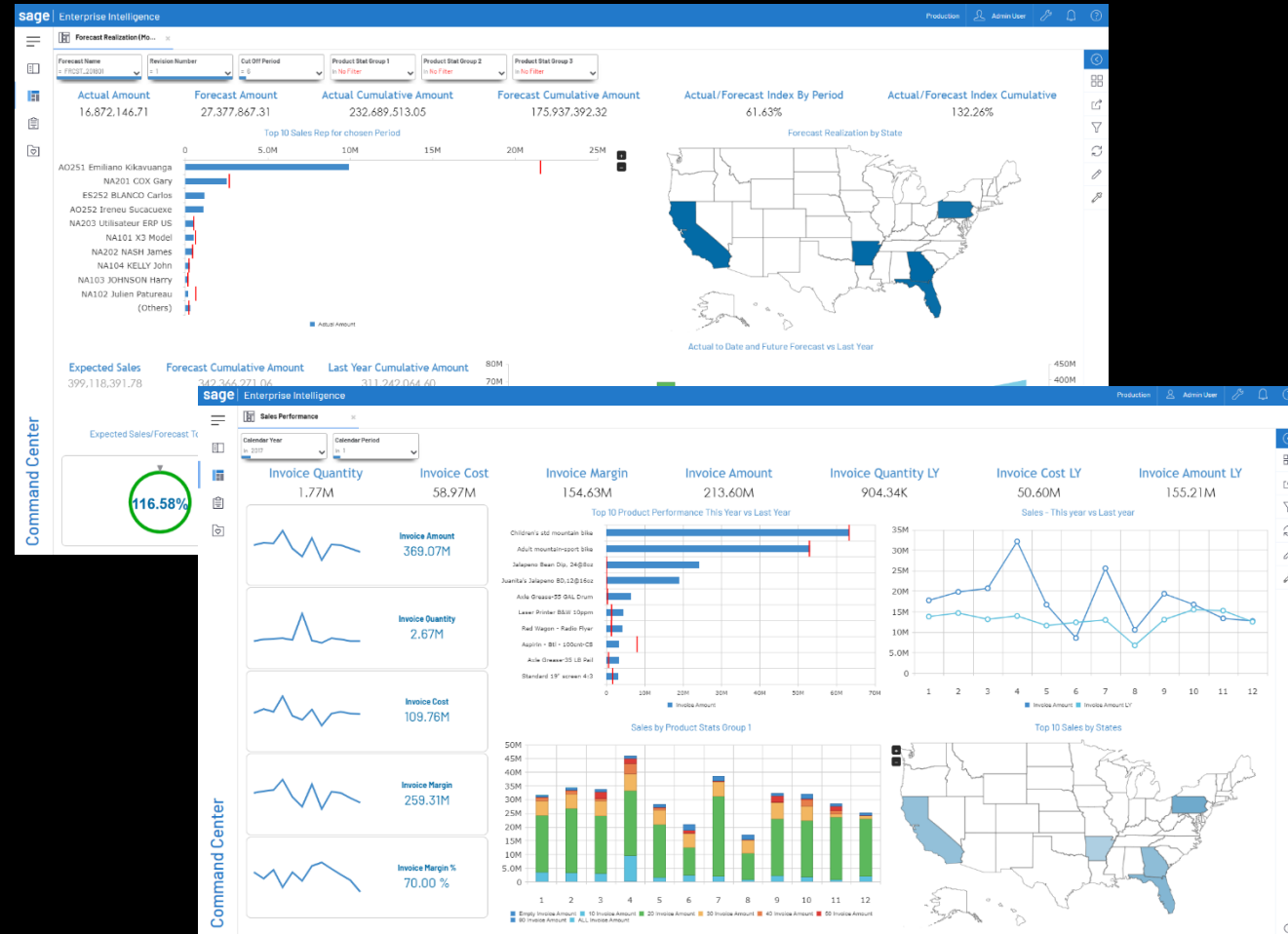


Real-Time Assessment of Customer and Supplier Demands

Sales dashboards to support:

- Sales performance and enablement
- Sales forecasting
- Predicting customer demand
 - Customer order analysis
 - Customer purchasing analysis

Sales Forecast & Realization



Sales Performance

Counter Future Supply Chain Disruptions

Supply Chain dashboards to support:

- Supplier performance
- Inventory tracking and valuation
- Manufacturing performance
- Purchasing insights

Sales Analysis

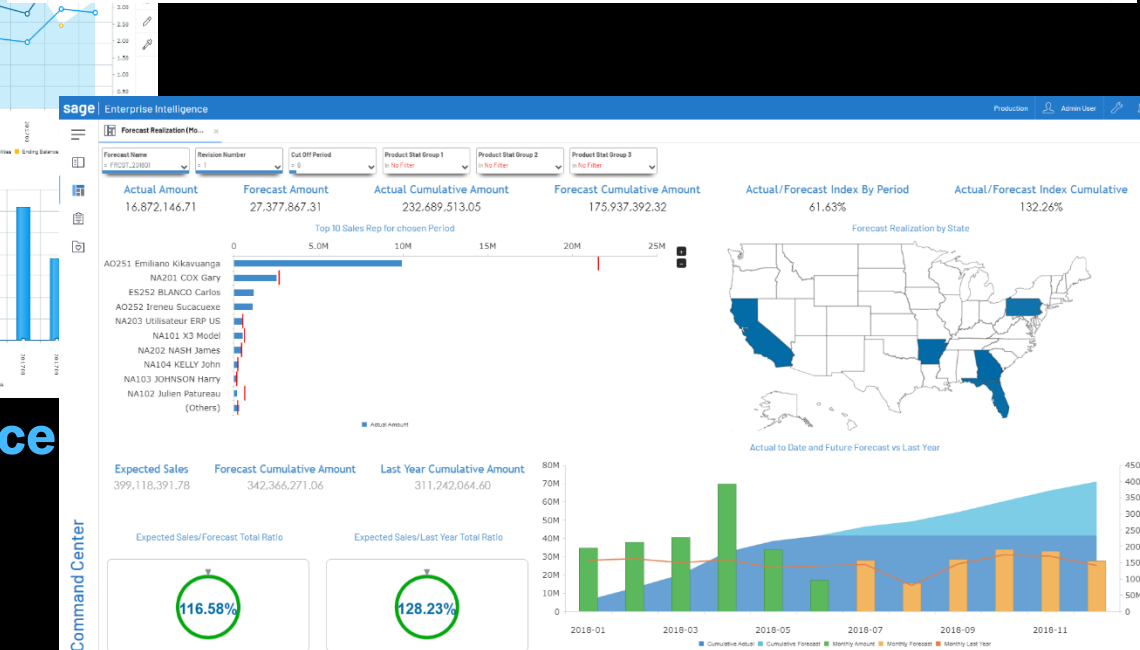
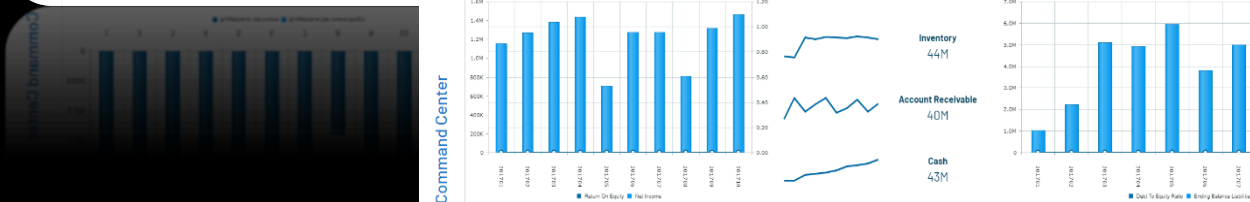
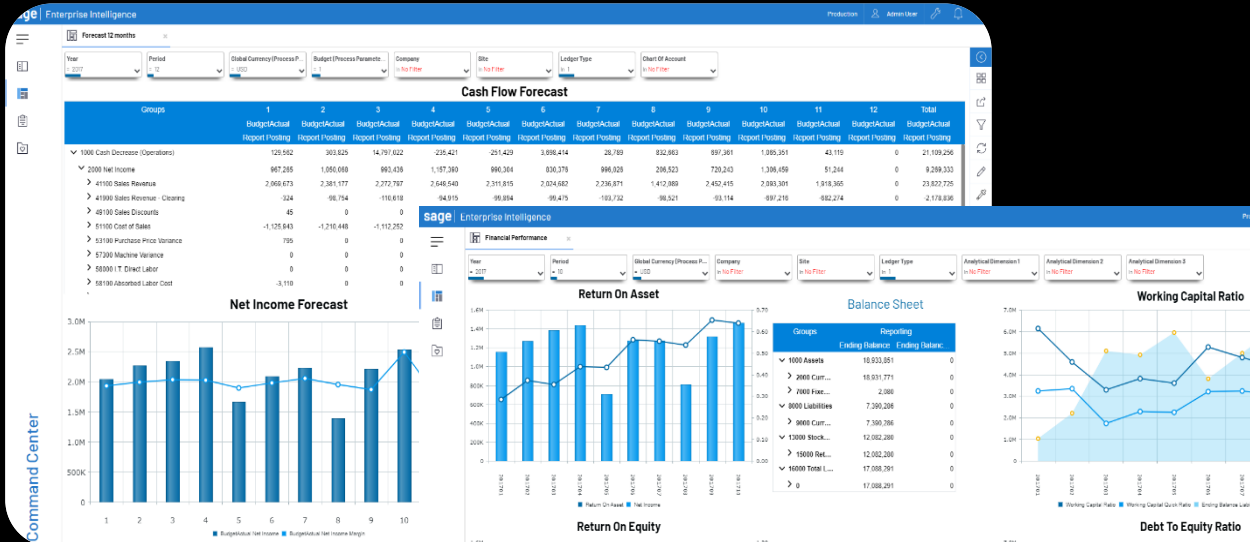
Procurement



Production

Features and Functionalities

Cash Flow Forecast



Financial Performance

Features and Functionalities

Excel Form control

sage Enterprise Intelligence

Analytical Report

Fold / Unfold

Fiscal Year: 1 2

Period: 1 2 3 4 5 6 7 8 9 10 11 12

Chart of Account: ABR ADE AES AFR APT AUS BEA BRI FRA GER

Site: AU011 AU012 BE021 DE011 DE012 DE021 DE022 DE023 ES011 ES012 ES021

Excel Slicer

Realtime Data

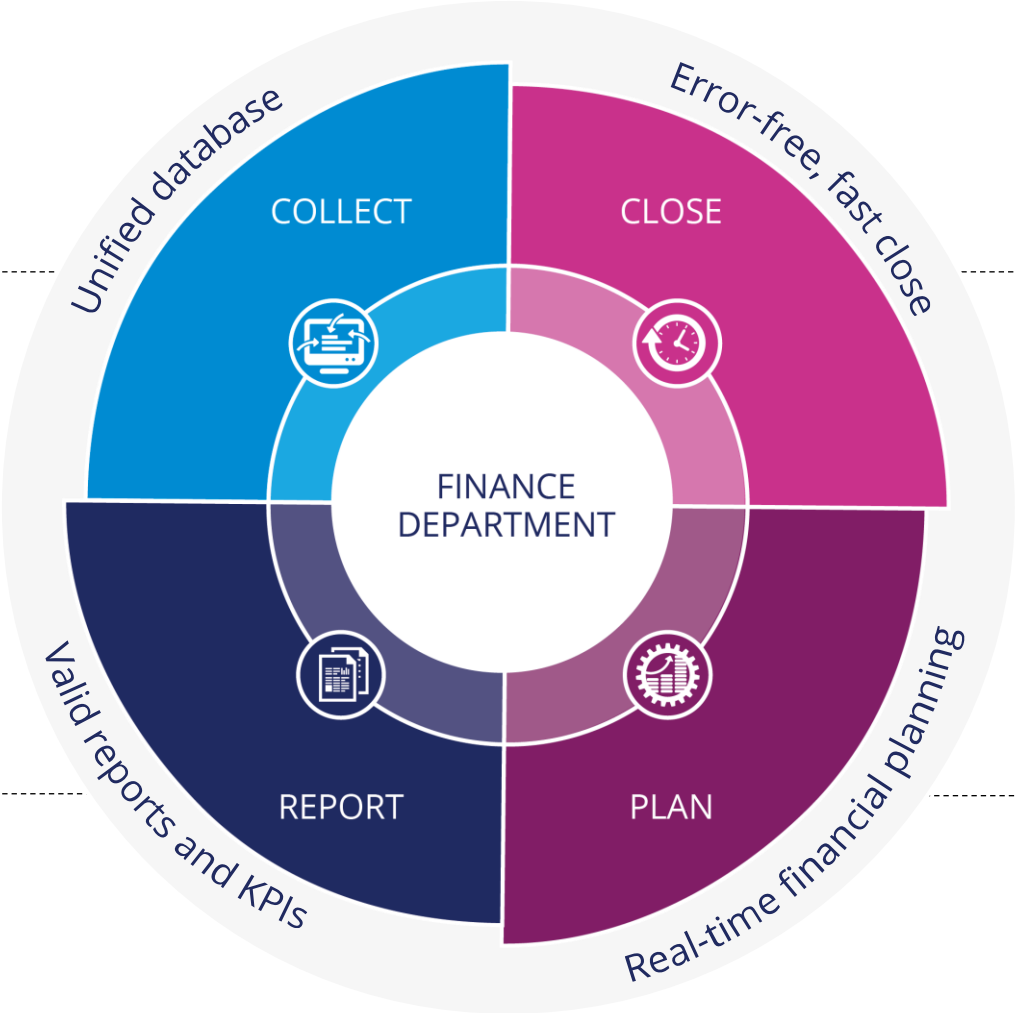
Posting				Fiscal Year	Period													1 Total
Analytical Dimension1	Analytical Dimension 1 desc.	Account Code	Account Desc.	1	2	3	4	5	6	7	8	9	10	11	12			
IT-001	IT Department	205000	Concession													0		
		208000	Others													340		
		218300	Comput eqp	3000		10700	3400									17100		
		231000	Tang. IP	1000												1000		
		601100	RM purchase	0	0	0	0	0	0	0	0	0	0	0	0	0		
		604000	Studies	0	0	0	0	0	0	0	0	0	0	0	0	0		
		607000	Goods purch													0		
		622600	Fees													0		
		623000	Advertising													0		
		701000	Prod sales	0	0	0	0	0	0	0	0	0	0	0	0	0		
		706000	Serv prov													0		
		707000	Goods sales													0		
		708500	Freight bill													0		
																0		
		41100	Sales													-62442.616		
		62500														277.78		
		62800														5293.87		
		62300														2080.4		
		621100	Temporary	0	0	0	0	0	0	0	0	0	0	0	0	0		
		641100	Salaries	0	0	0	0	0	0	0	0	0	0	0	0	0		
		681110	ADP Int	0	0	0	0	0	0	0	0	0	0	0	0	0		
		611000	Subcontract	0	0	0	0	0	0	0	0	0	0	0	0	0		
		602100	Consumables													0		
		602200	Supply													0		
		612200	Mov prop lea													0		

LucaNet

THE ALL-IN-ONE SOLUTION FOR FINANCE TEAMS

- Data integration
- Data collection and validation
- Intercompany reconciliation at transaction level

- Management reporting
- Disclosure management and last-mile reporting
- Sustainable reporting (ESG)
- BI and dashboarding

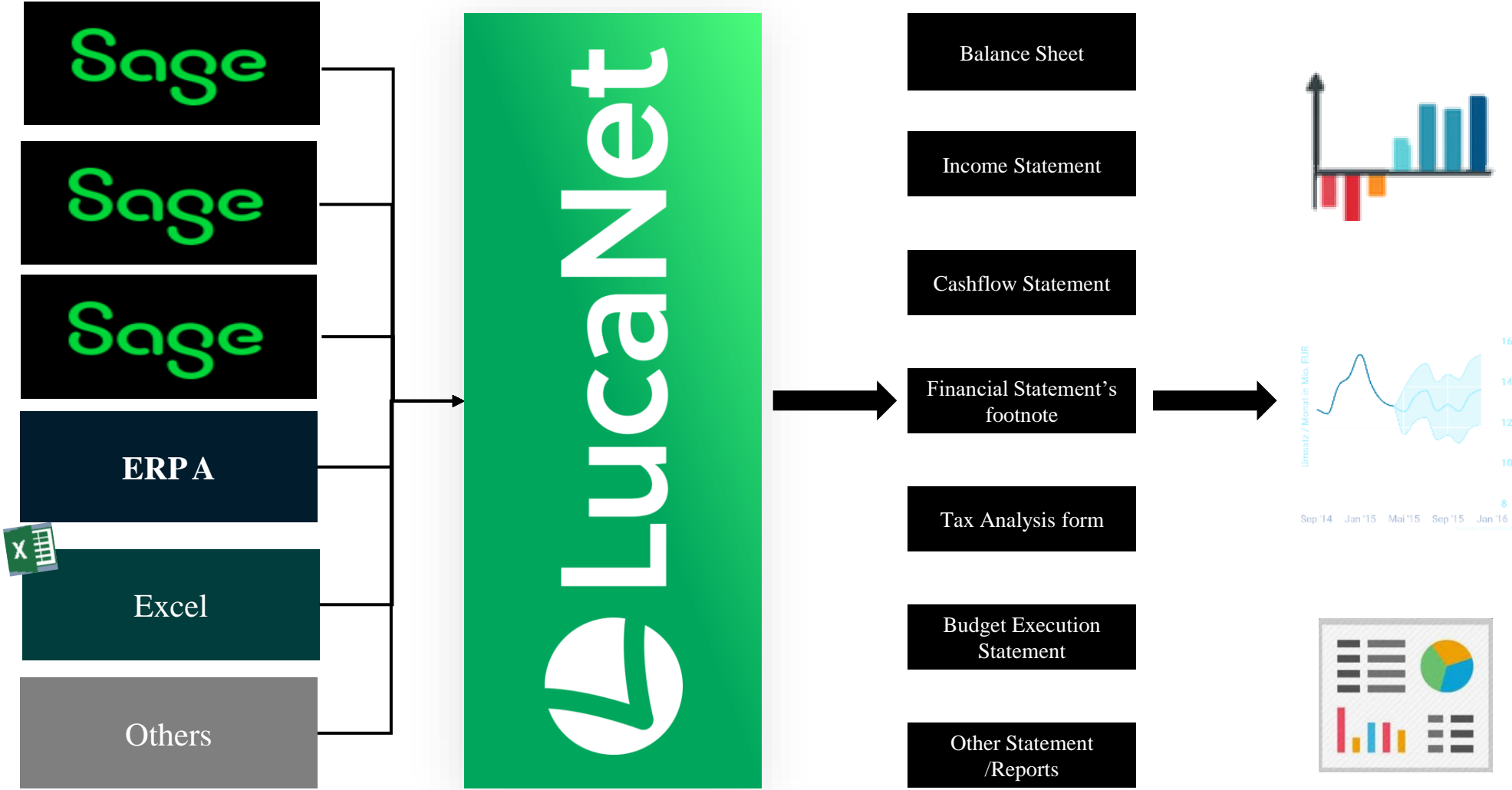


- Financial consolidation
- IFRS 16
- Aging analysis

- Financial planning and analysis
- Forecasting and scenarios
- Controlling

Group company statement/report issuance process

process



Data Integration

Data application

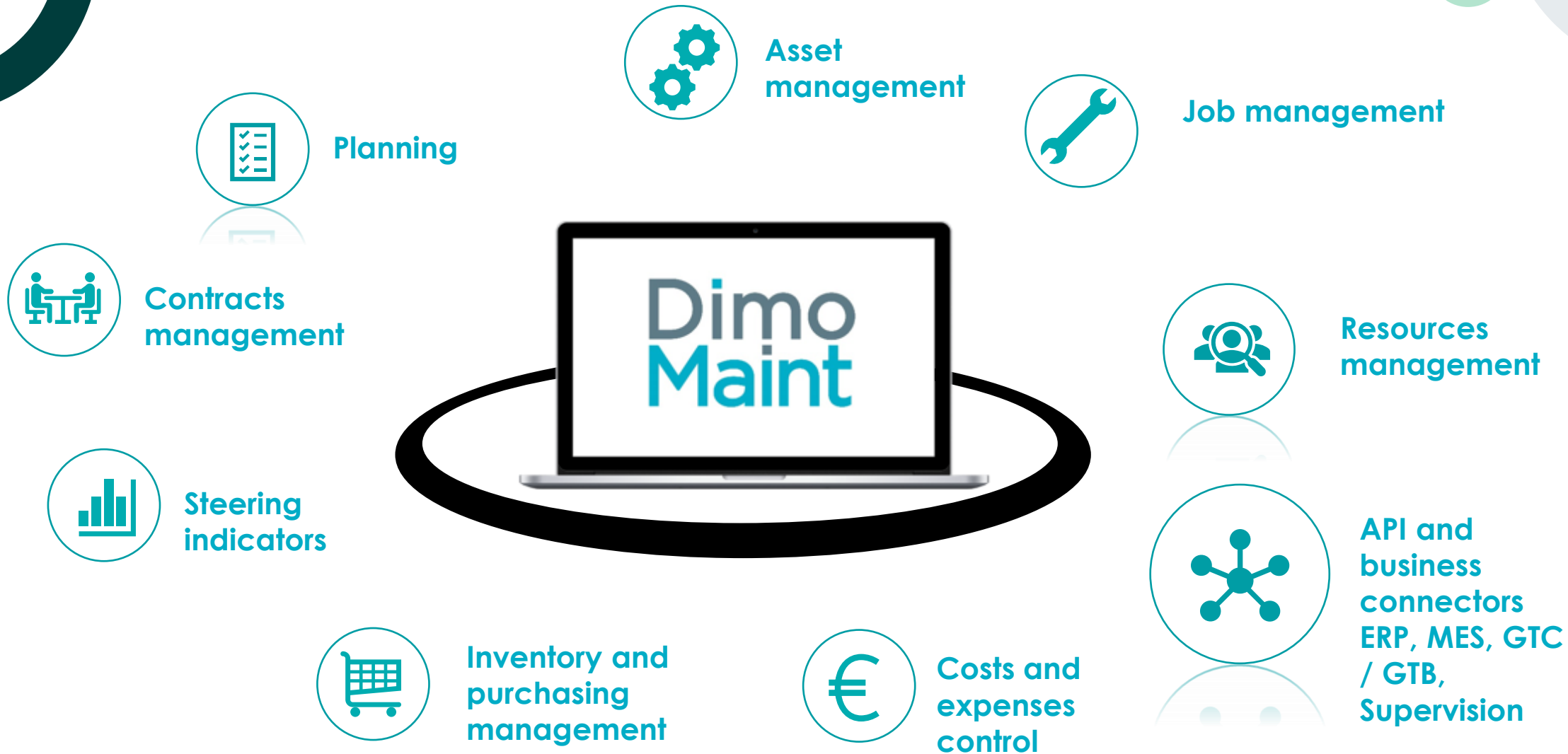
Data Display

© 2022 The Sage Group plc, or its licensors. All rights reserved.



Manage your maintenance with DIMO Maint

Key Features



DIMO Maint MX: the CMMS new generation

With DIMO Maint MX, we imagine **the CMMS of tomorrow**: modern, ergonomic, collaborative, communicating, intelligent, adapted **to international constraints and more pleasant to use!**

Cloud-based
CMMS
the new
generation

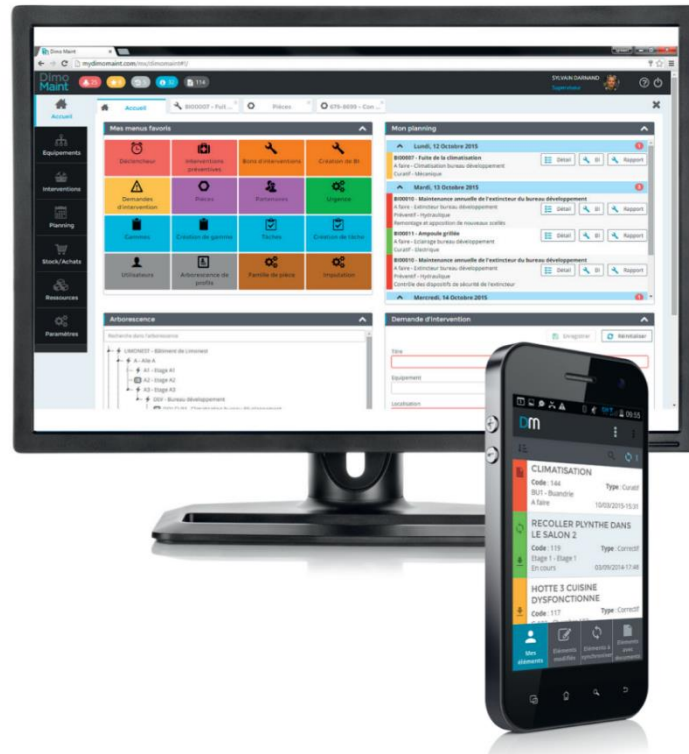
1

Multi-platform

2

Mobile

3



4

Scalable

5

Multi: language,
time-zone,
currency

6

Innovative user-
friendliness

Key take away



Sage continues to invest what matters to you
“Customer first”



The only platform that you would ever need with SAGE



Ease of upgrading with the new tools to smoothen the upgrade journey

Benefits of renewing Sage Cover

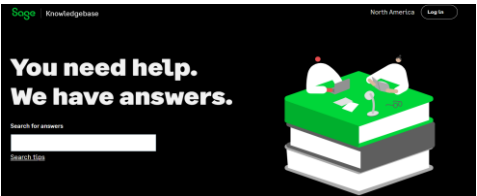
Get prompt update of What's New

- New Features/New Enhancements/ Security Alerts
- Patches and Hot Fixes for severe issues/ Security Threats
- Allow to purchase additional licenses from Sage



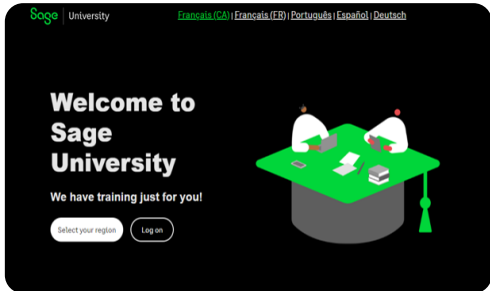
Online Library: Sage Knowledgebase

- Search technical articles written by Sage support analysts in Sage Knowledgebase.
- Level 2 Technical support. (through your Business Partner)
- Bugs and Escalation



Online Campus: Sage University

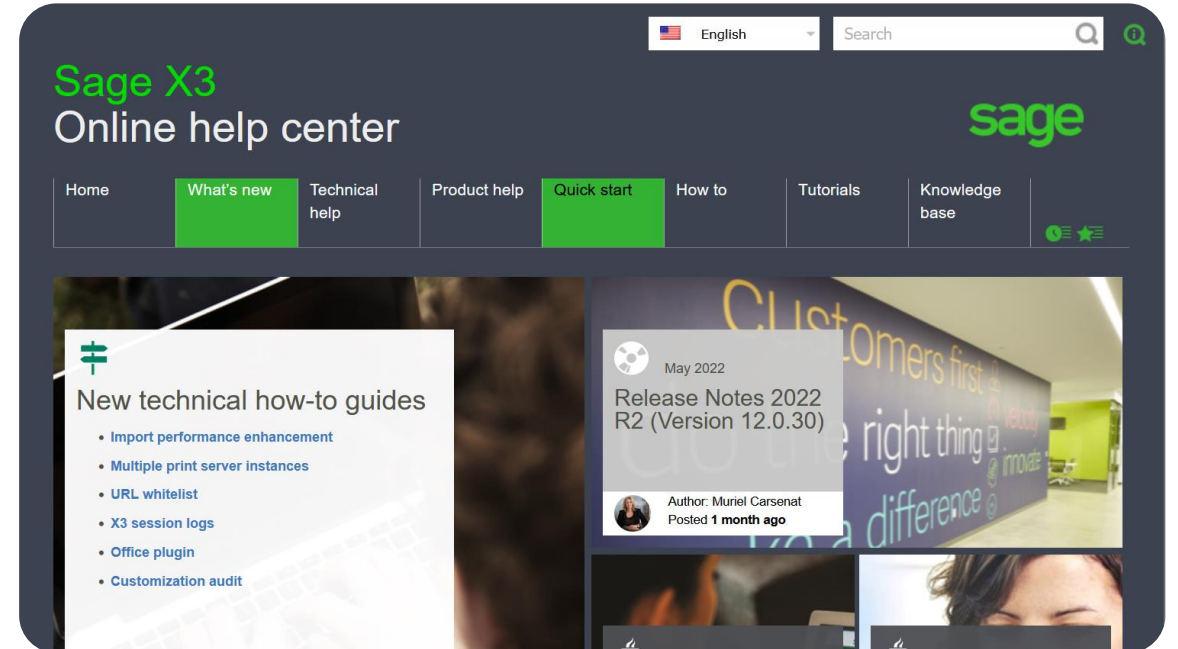
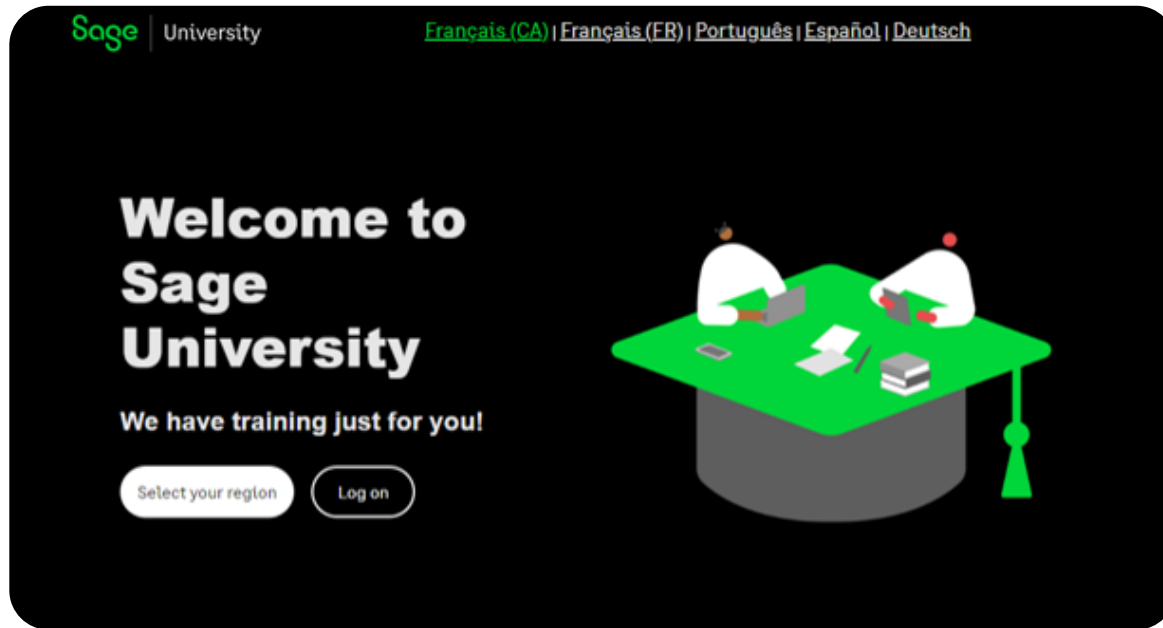
- Utilize the full power of Sage software with flexible learning options from Sage University.
- New hires onboarding
- Existing user refresher



Customer Webinar Series

- Attend free customer webinar to teach you how to extend the power of your Sage solution. E.g.:-
 - ✓ Foreign Exchange Controls and Taxation of cross-border
 - ✓ Fundamental of China Taxation
 - ✓ Singapore GST

If you want to know more...



Thank you .