

Data Analytics

Date : November 24, 2021
Time: 15.30 – 16.00

Kwanchat Taksinvarajarn

Senior Application Consultant CPA



sage



Data Analytic with Sage Intelligence

Confidential for FMS Customer Day



What is Sage Intelligent

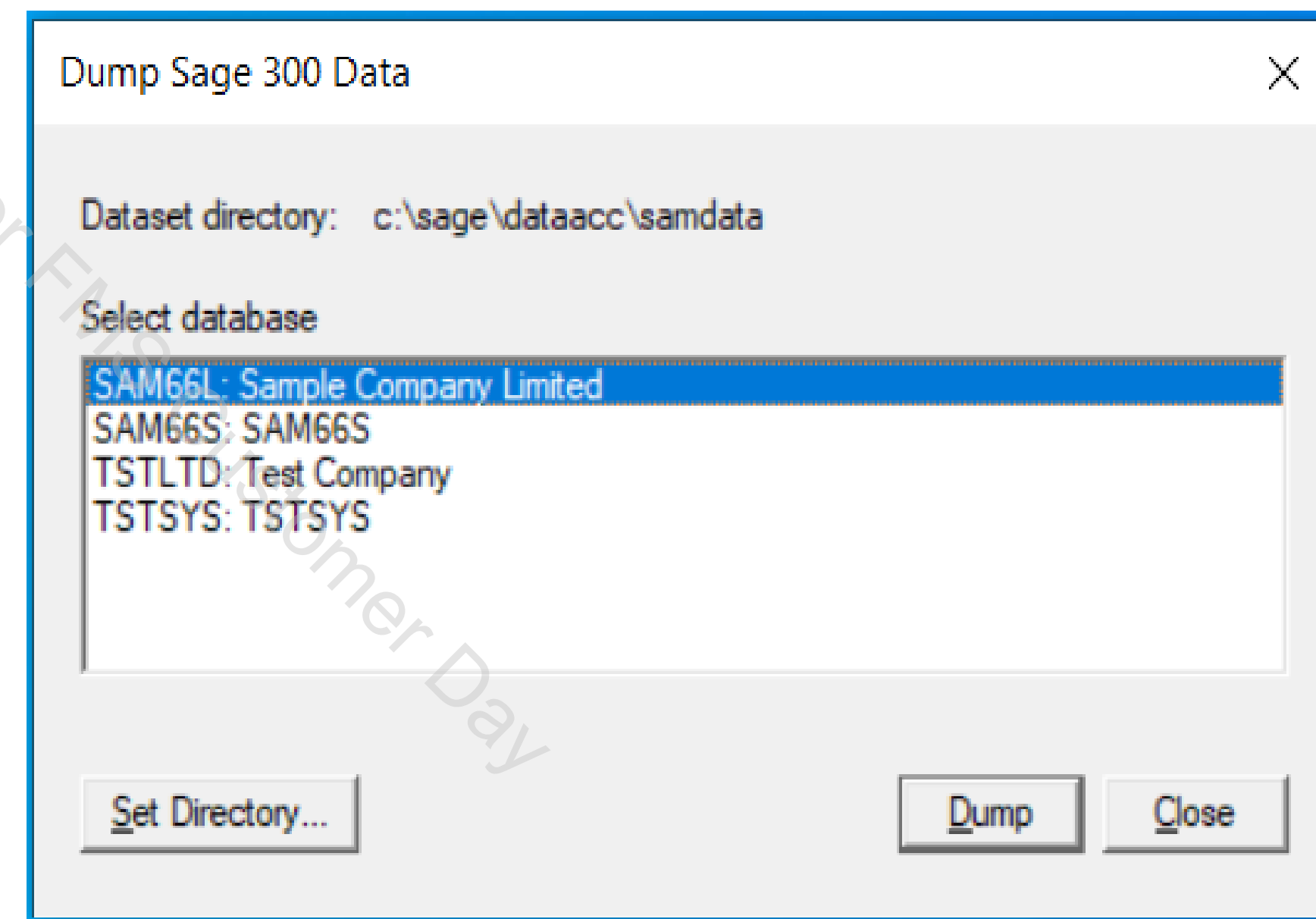
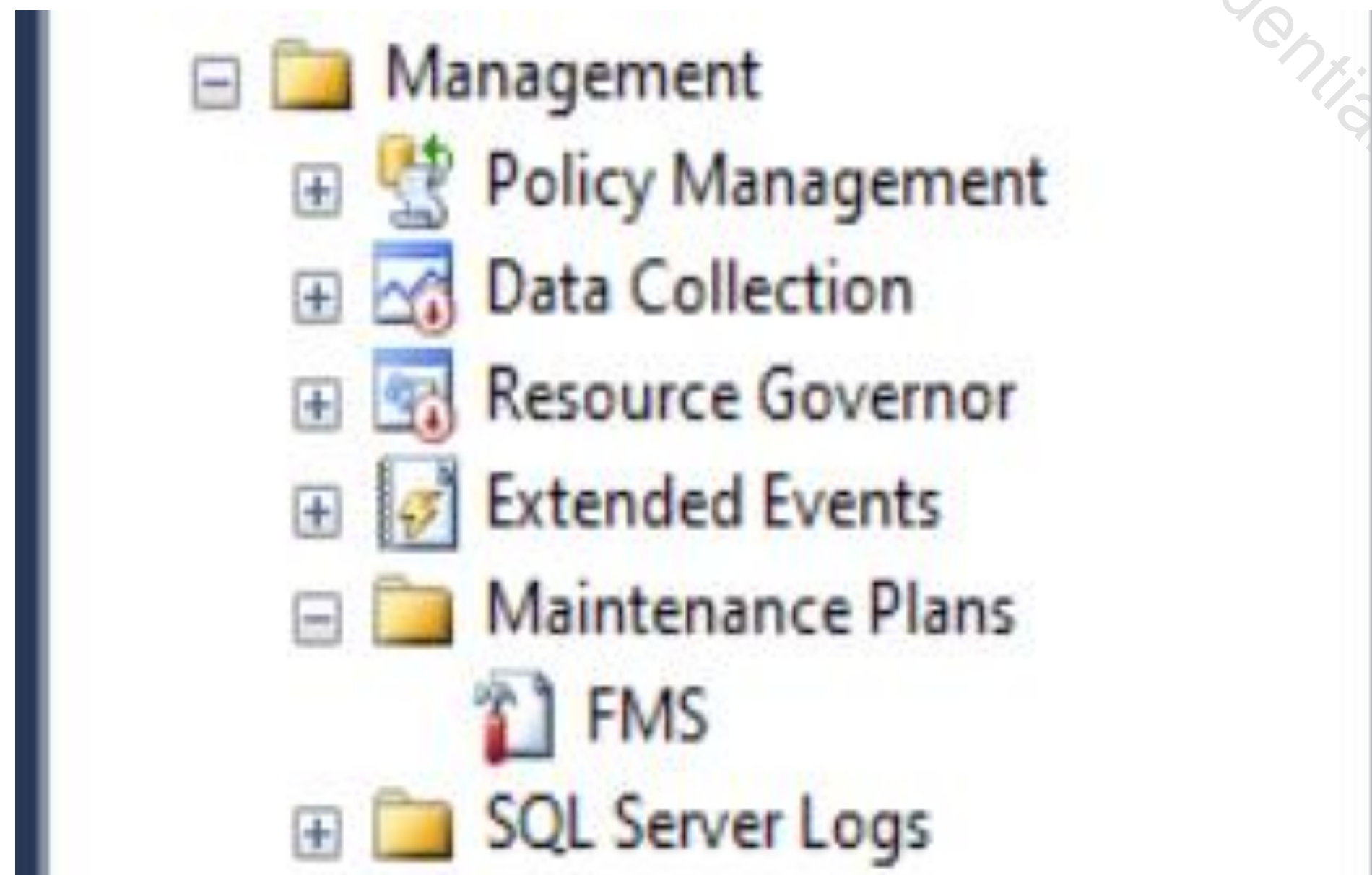
Sage Intelligence is a simple, flexible reporting solution that gives you meaningful insights into your business information, on the go. Sage Intelligence empowers you with immediate access to ready-to-use reports and dashboards that offer instant insights into the business without having to leave your Sage solution.

How to setup Sage Intelligence Reporting

1. Backup system and company databases using SQL Tool or Sage Tool
2. Install Module Sage Intelligence
3. Activate Module Sage Intelligence

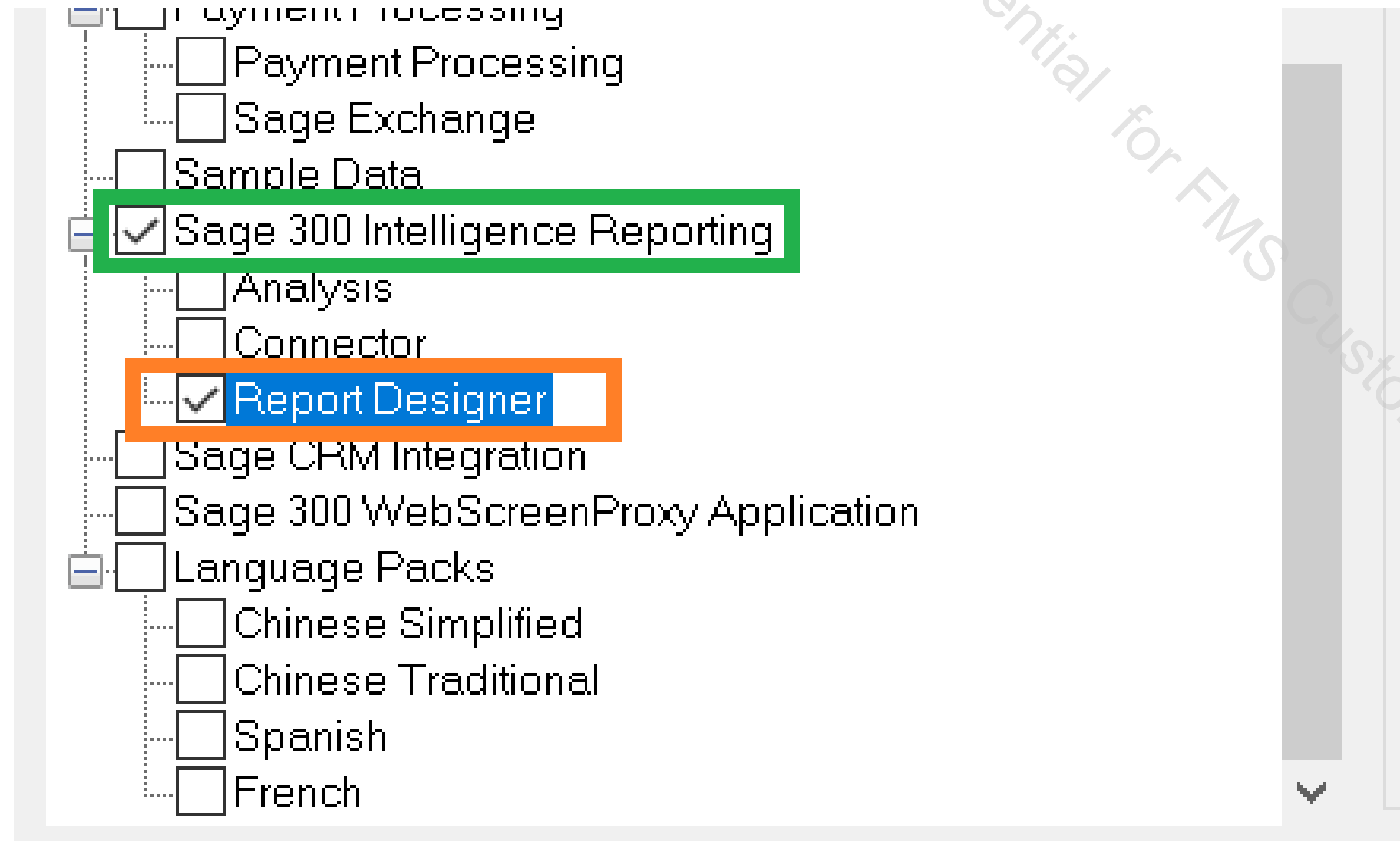
How to setup Sage Intelligence Reporting

1. Backup system and company databases using SQL Tool or Sage Tool



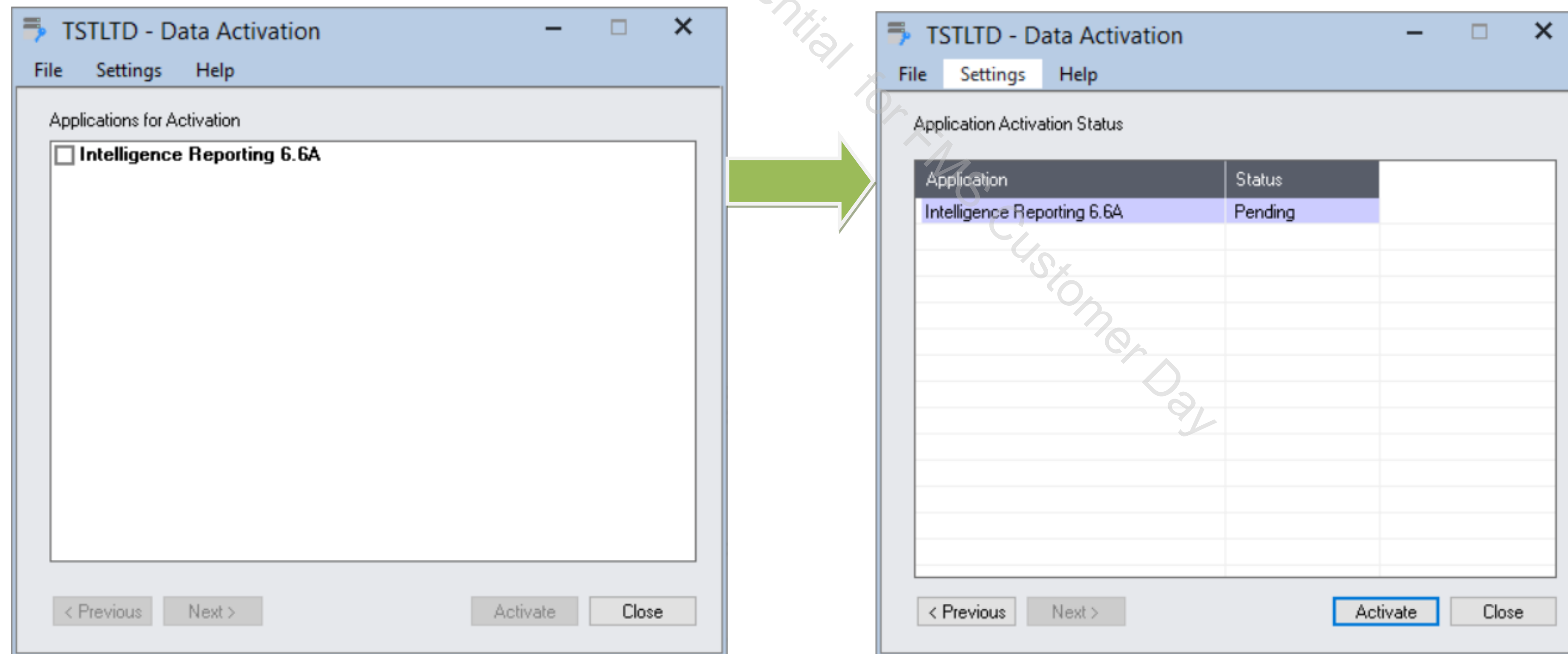
How to setup Sage Intelligence Reporting

2. Install Module Sage Intelligence



How to setup Sage Intelligence Reporting

3. Activate Module Sage Intelligence



Overview Sage Intelligence Reporting

- Report Manager
- Report Viewer
- Report Designer
- Connector
- Security Manager
- License Manager

Confidential for FMS Customer Day

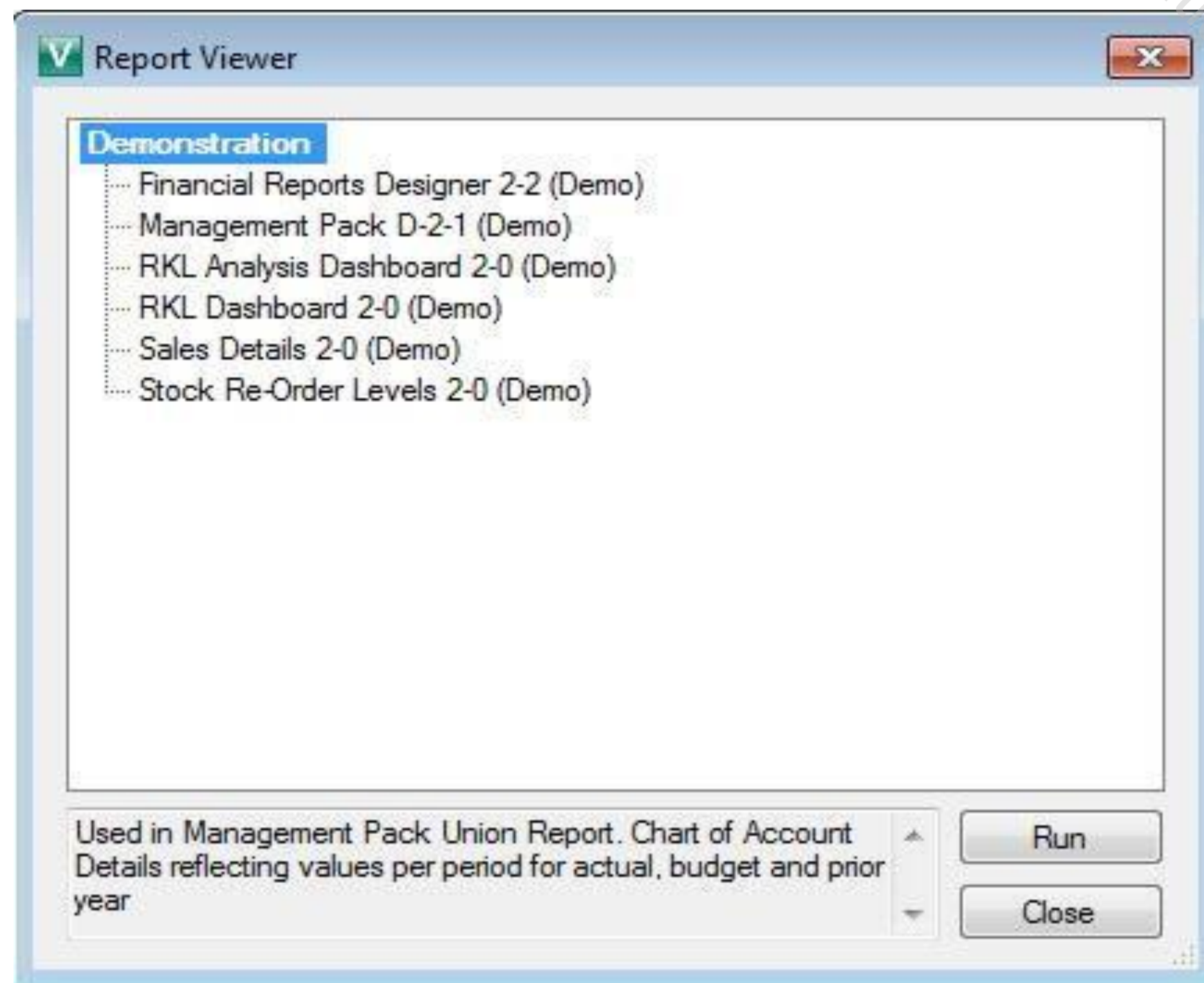
Overview Sage Intelligence Reporting

➤ Report Manager



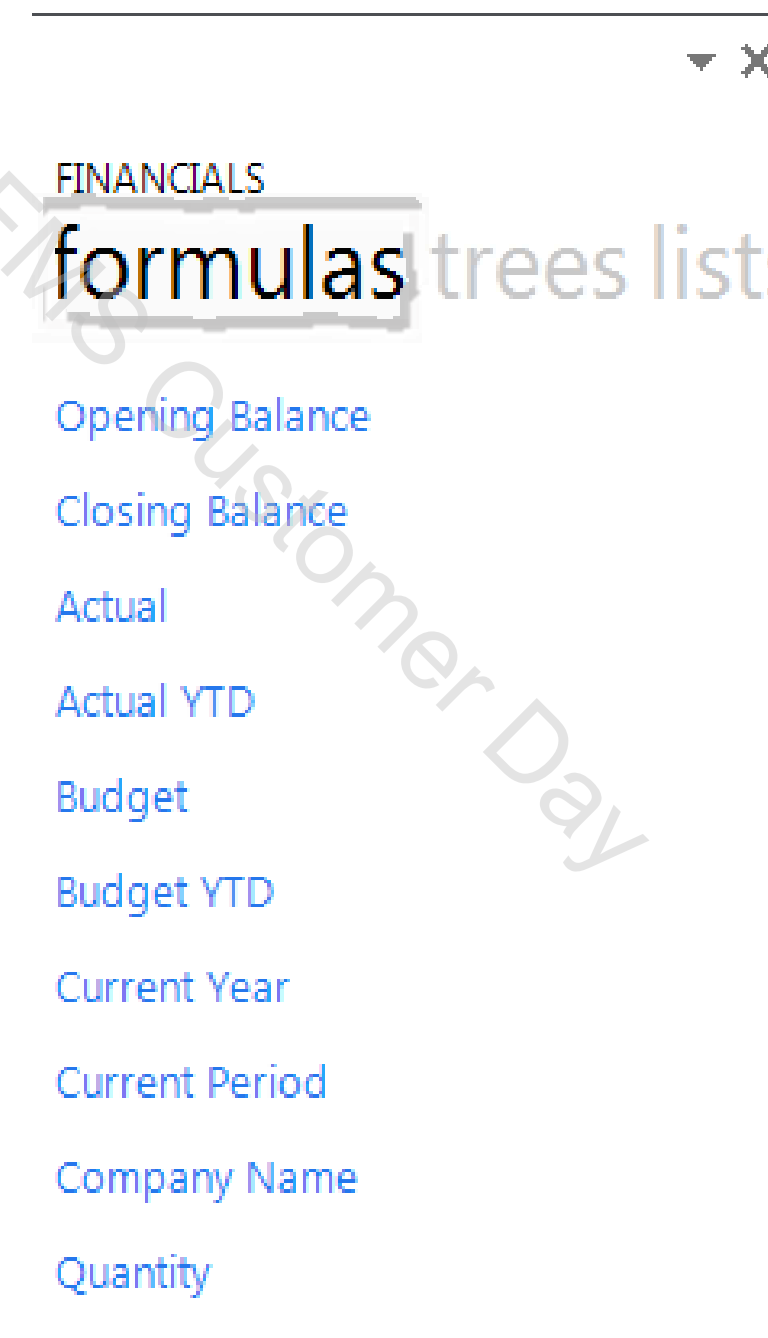
Overview Sage Intelligence Reporting

➤ Report Viewer



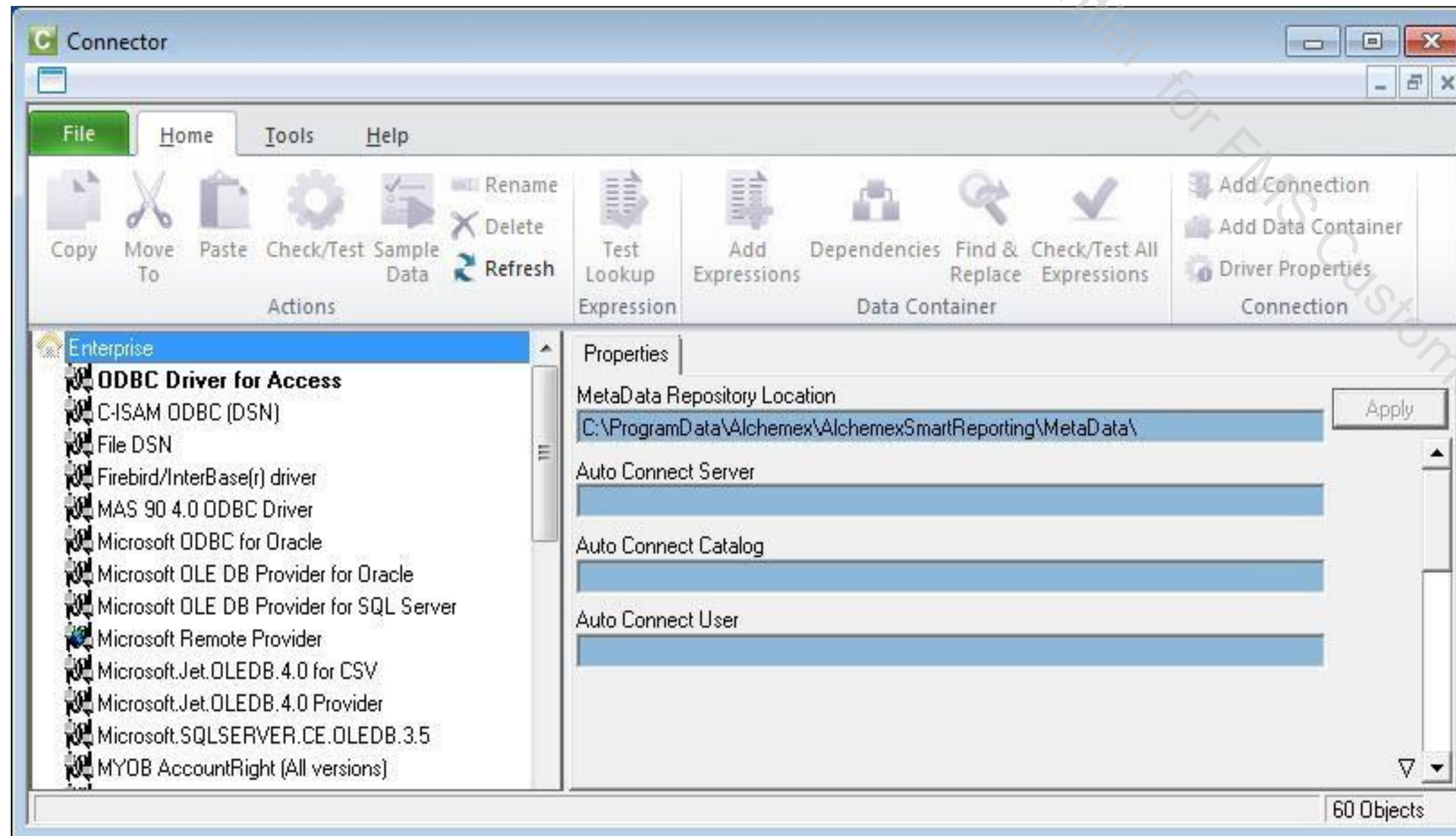
Overview Sage Intelligence Reporting

➤ Report Designer



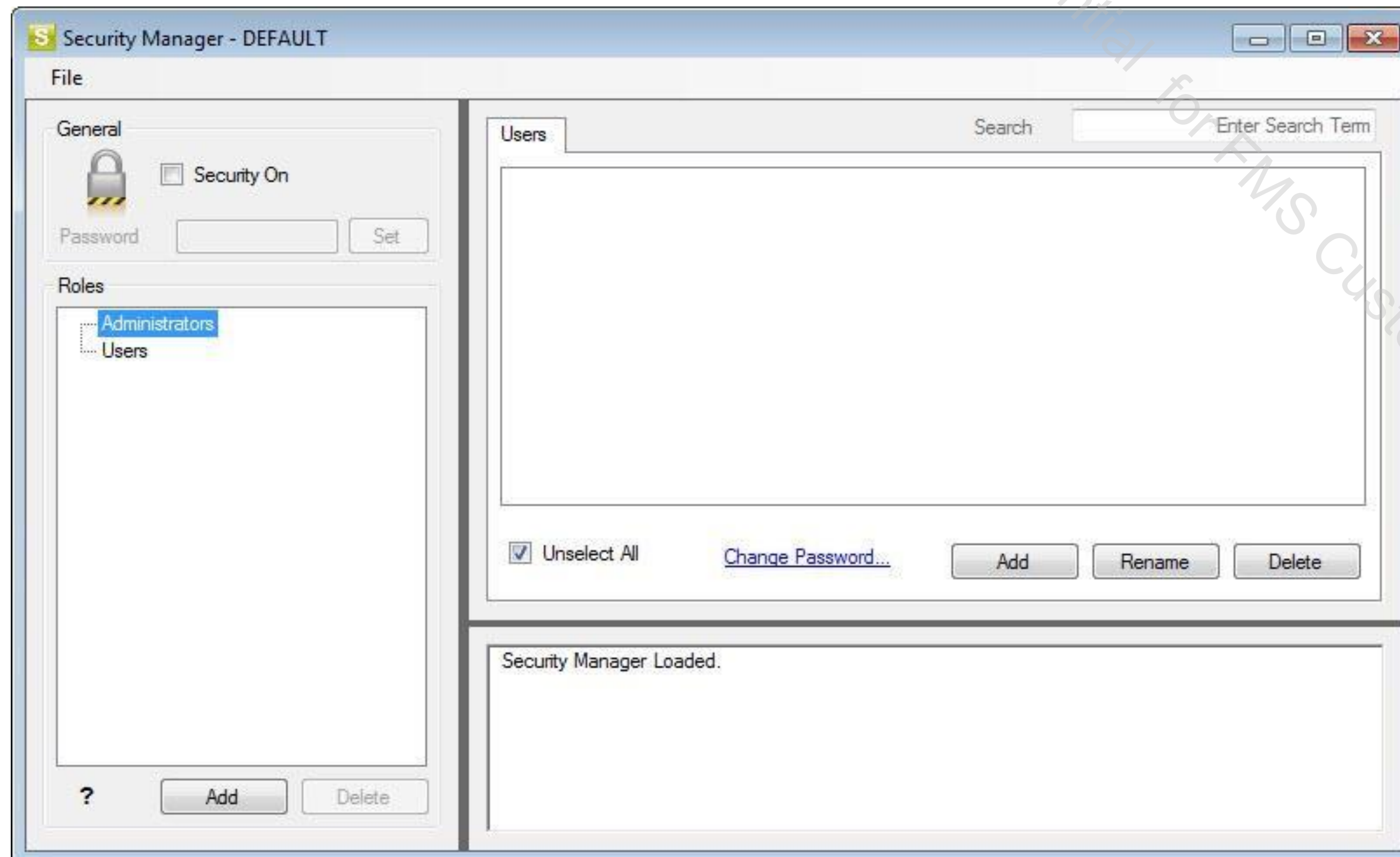
Overview Sage Intelligence Reporting

➤ Connector



Overview Sage Intelligence Reporting

➤ Security Manager



Overview Sage Intelligence Reporting

➤ License Manager

License Manager

File

Help

Connector Licensed

NO

Analysis Licensed

NO

Report Manager Licenses

1

Report Viewer Licenses

0

Assigned Licenses

Report Designer Licensed

YES

User	License Type	Workstation
ADMIN	Report Manager	DELL-G3

Add

Change

Delete

Sample for Standard Report

Confidential for FMS Customer Day

Q&A

Confidential for FMS Customer Day



THANK YOU

Confidential for FMS Customer Day