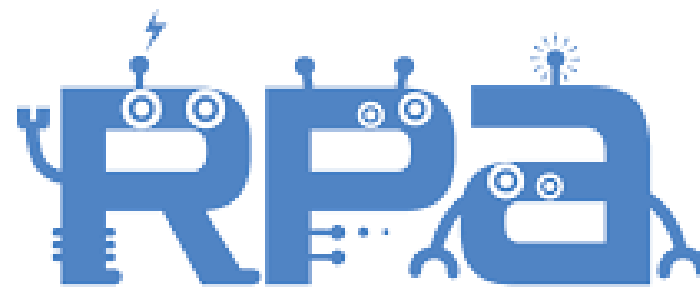


Robotic Process Automation

Date : November 25, 2021
Time: 11.30 – 12.00

WinActor



Contents

What is RPA?

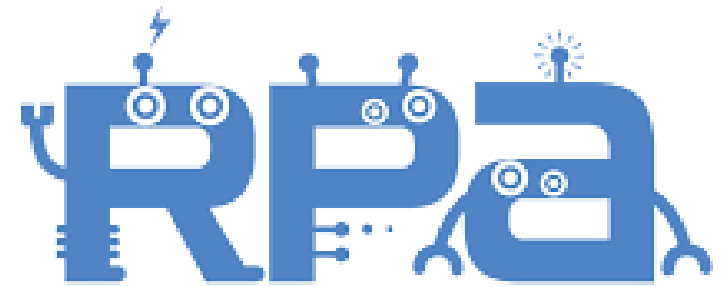
RPA Benefit

RPA Application

RPA Components & Structure

RPA Journey

What is RPA?



What is RPA?

R obotic

P rocess

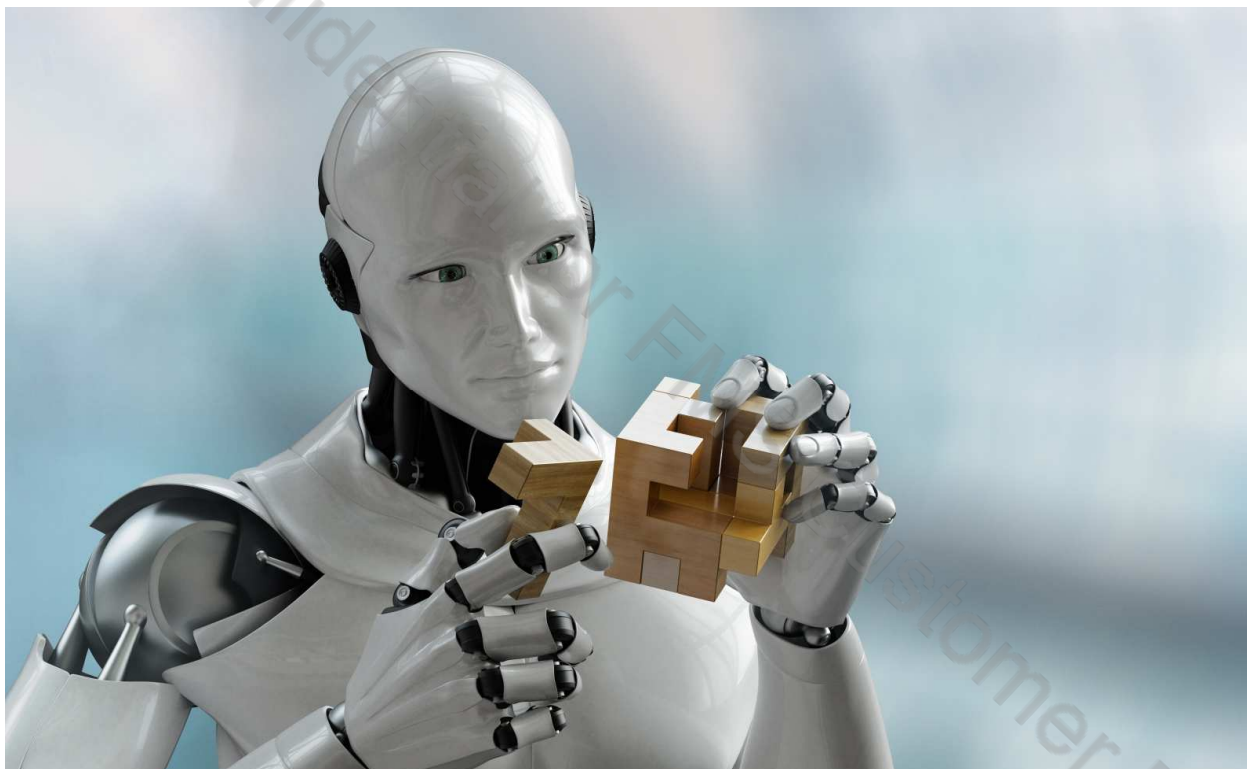
A utomation

แอปพลิเคชันเพื่อช่วยปฏิบัติงานดิจิทัลแบบอัตโนมัติ

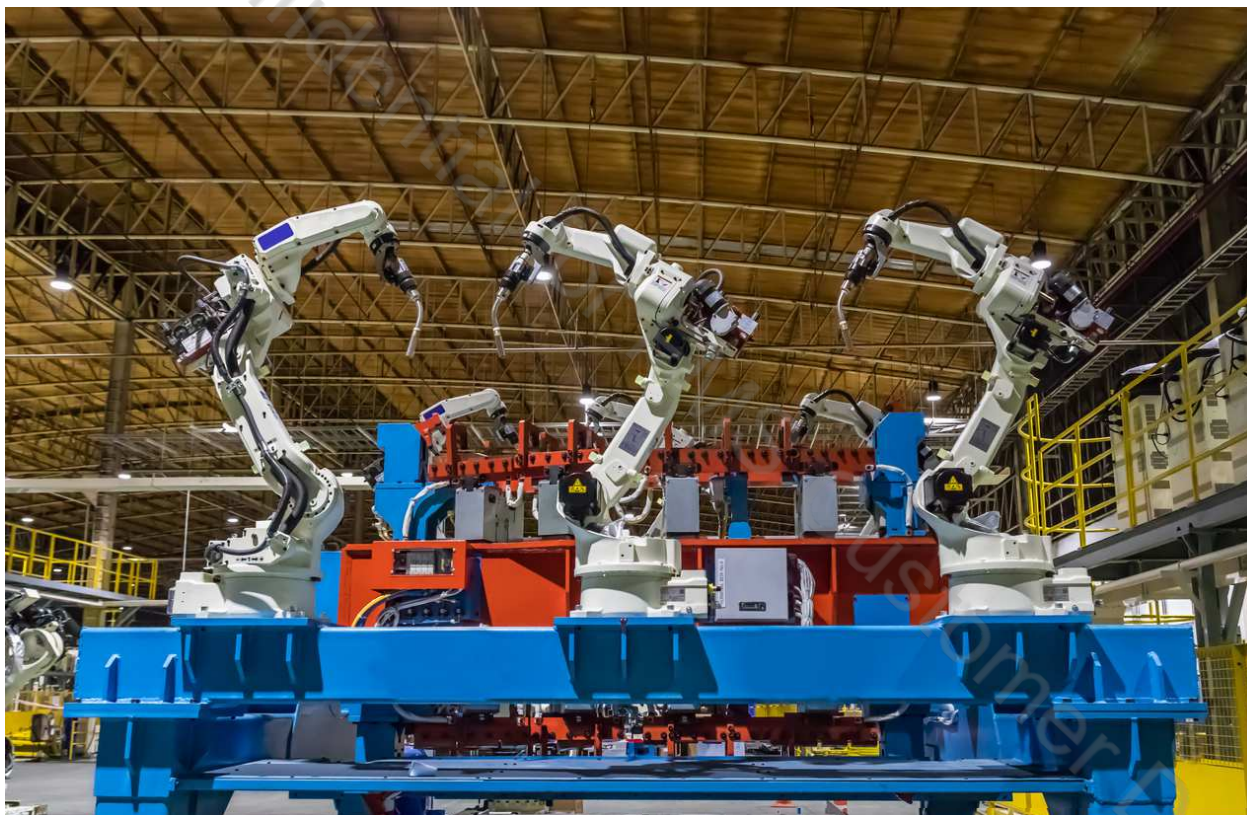
What is RPA?



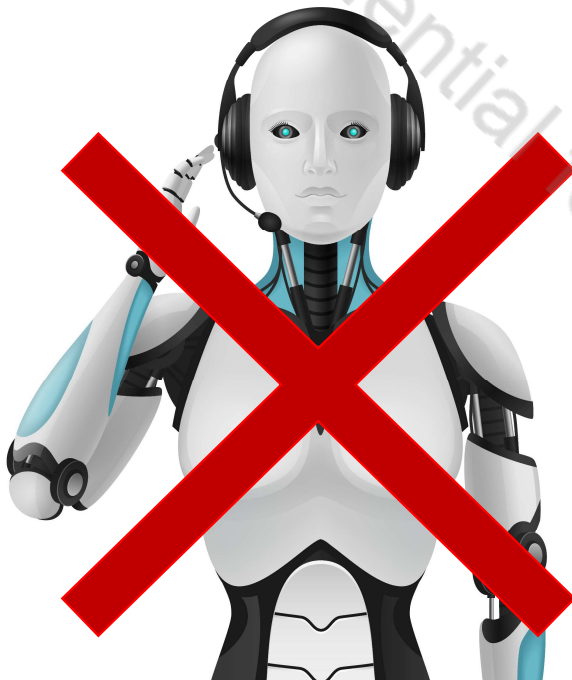
What is RPA?



Robot is ...



Robot is ...

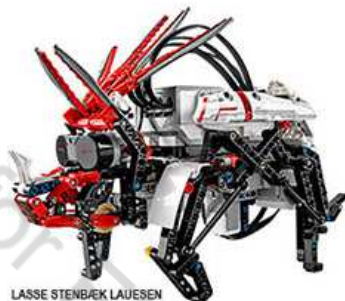


RPA comparing to ROBOT

MINDSTORMS
EV3
Home Edition: #31313



RPA comparing to ROBOT



RPA is



Software for corporation



Able to run task/work with repetitive and fix form



Bridging between multiple system/application

RPA is **NOT**



Robot that can walk or make a speech



Virtual assistant



AI, ML, voice recognition or interactive software

What can RPA Do?



Log in to any application



Connect to
system APIs



Move files
and folders



Extract content from documents, PDFs,
emails and forms



Read and write
to databases



Open emails
and attachments



Scrape data from the web



Make calculations



nsuasswangs
THE REVENUE DEPARTMENT



sage

WinActor®

Robot and Related Technologies

A.I. (Artificial intelligence)

ML (Machine Learning)

OCR (Optical Character Recognition)

Voice Recognition

Chatbot

NLP (Natural Language Processing)






nsuasswangs
THE REVENUE DEPARTMENT



THAILAND
BOARD OF
INVESTMENT



Conditions

1. Digitalized & Structuralized	
2. Repetitive (Frequently)	
3. Clear Process & Logic	

RPA Features

1. Easy to use



2. Just Drag and Drop



3. No Need Coding Skill



How it works



1 Record

Record PC operation activity to create scenario



2 Edit

Easily edit the scenario to match with your operation



3 Run

Run the scenario and Robot will do the rest of your work

RPA comparing to Human

Typical scenario of RPA

1 RPA = 1 Employee

Need 1 Working Station per 1 RPA

1 Task at a period of time

(Annually) Hire



* new feature of some RPAs allow sharing of working resources



nsuasswinn
THE REVENUE DEPARTMENT



THAILAND
BOARD OF
INVESTMENT

RPA comparing to Human

Typical scenario of RPA

Never Leave, Never Strike

Faster and Accuracy

24/7 is possible without OT



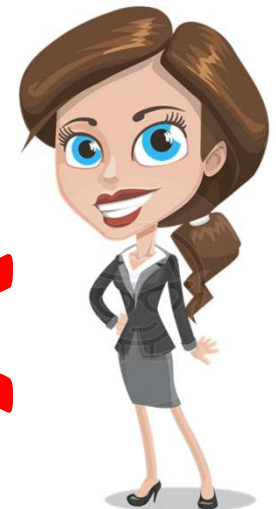
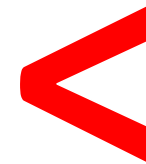
RPA comparing to Human

Typical scenario of RPA

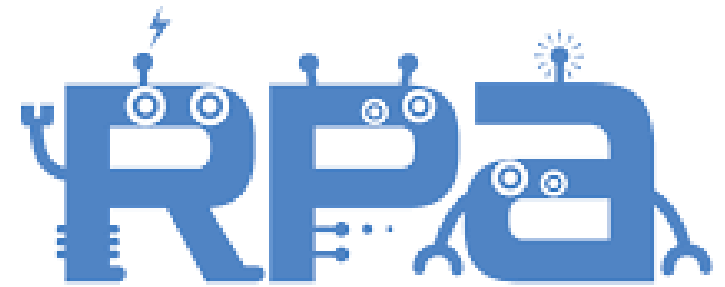
5 Senses

Common Sense or Experience

More Information Channels



RPA Benefit



RPA Benefit



Rapid ROI



Enhanced
Processes



Better Customer
Experience



Eliminate
Repetitive Work



Improved Service
Delivery



Enhanced Ability
to Manage



Cost Reduction



Insights and
Analytics

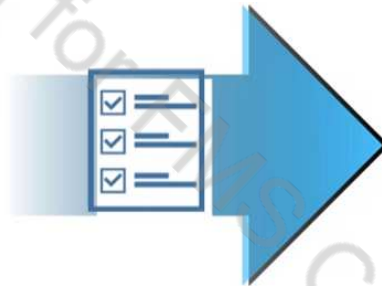


Increased
Compliance



Scalability and
Flexibility

Where Benefit come from?



Benefit from RPA

High Quality



No more human error, only accurate input



High Performance

Work faster and more workload, 24H and never resign

Clear Process



Visible and controllable process and avoid fraud



Maximize Resource

Employee could be focus on valuable and creative task



nsuasswngs
THE REVENUE DEPARTMENT



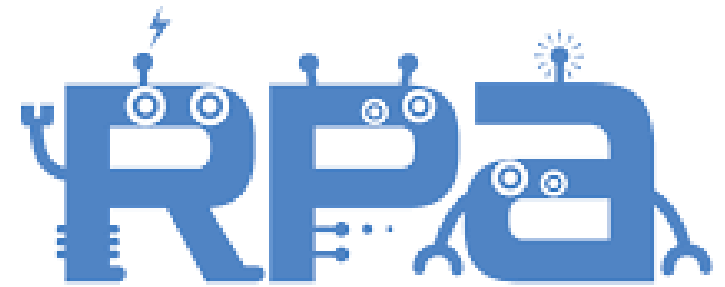
THAILAND
BOARD OF
INVESTMENT



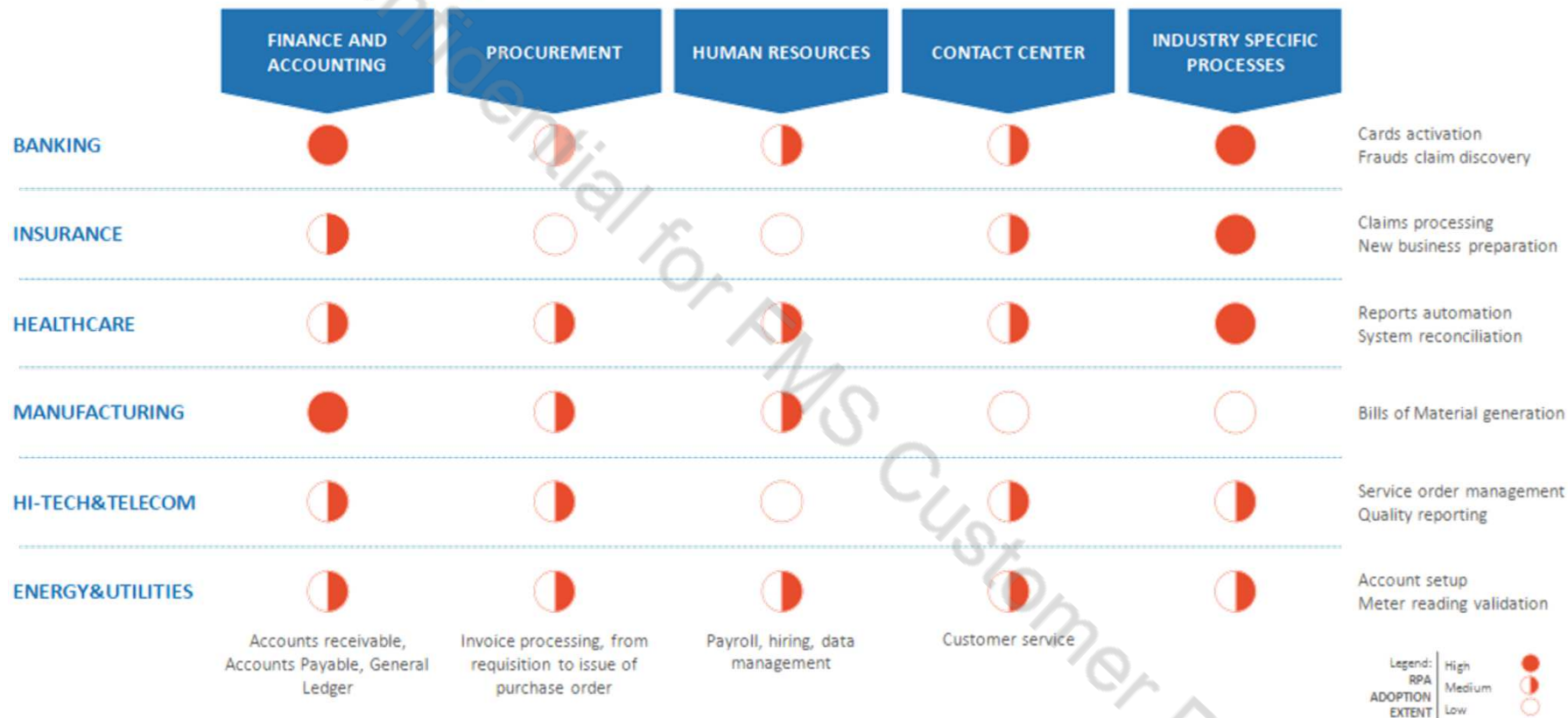
WinActor®

sage

RPA Application



RPA Adoption Across Processes and Industries



RPA in Banking and Finance Industry



Card activation



Account Opening



Anti-money laundering



Know Your Customer



Client onboarding

Processes for RPA

There are frequent mistakes in the job

Repetitive work

There is a lot of workflow

Able to standardize and structure data

Able to operate with digital tools

Unstable workload / high backlog

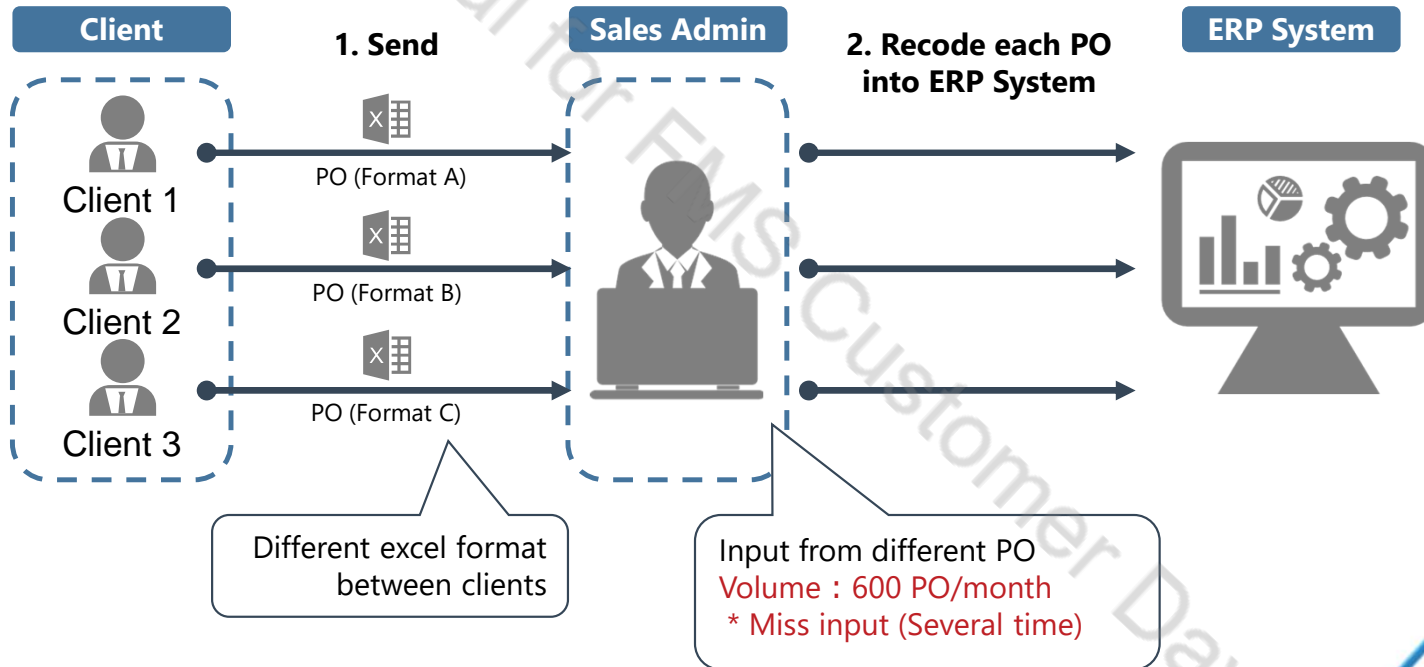


Case: Order Information

Input order information from excel to ERP
(Manual)

Operation

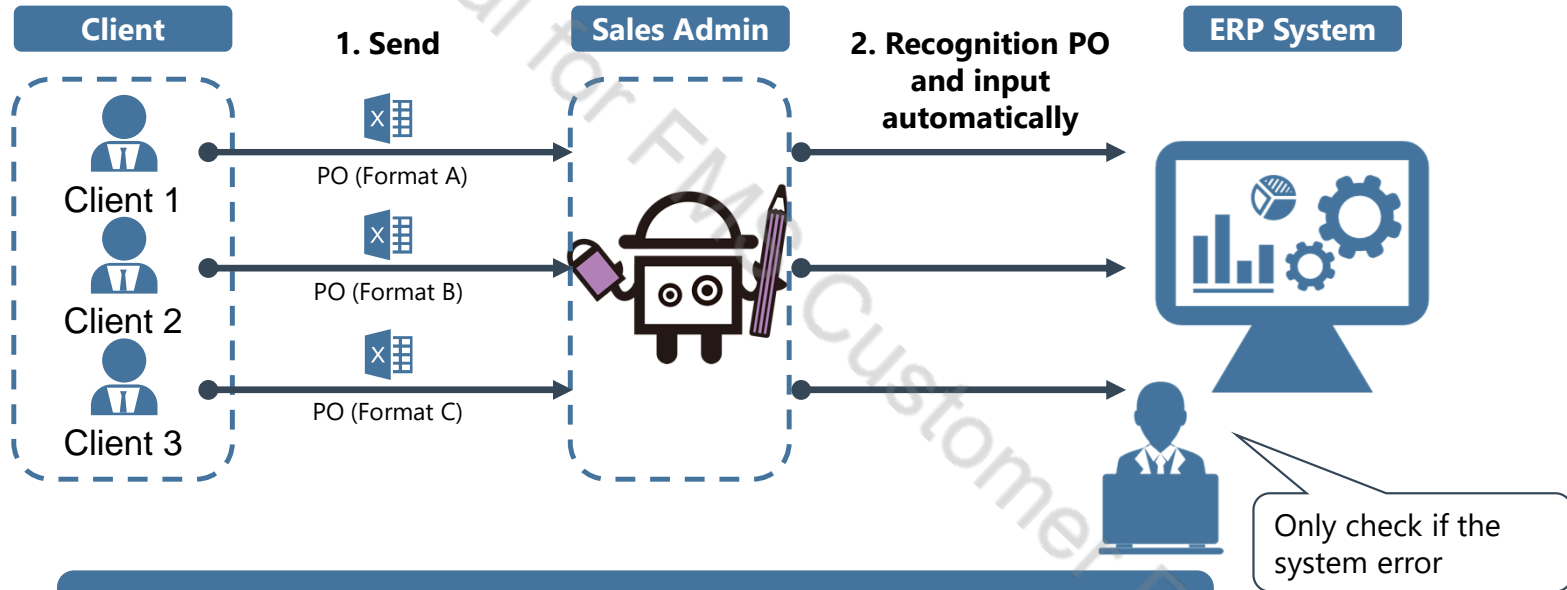
Input huge order information from excel to order management system (ERP)



Case: Order Information

Input order information to order management system - ERP
(Automated)

Operation Input huge order information from excel to order management system (ERP)

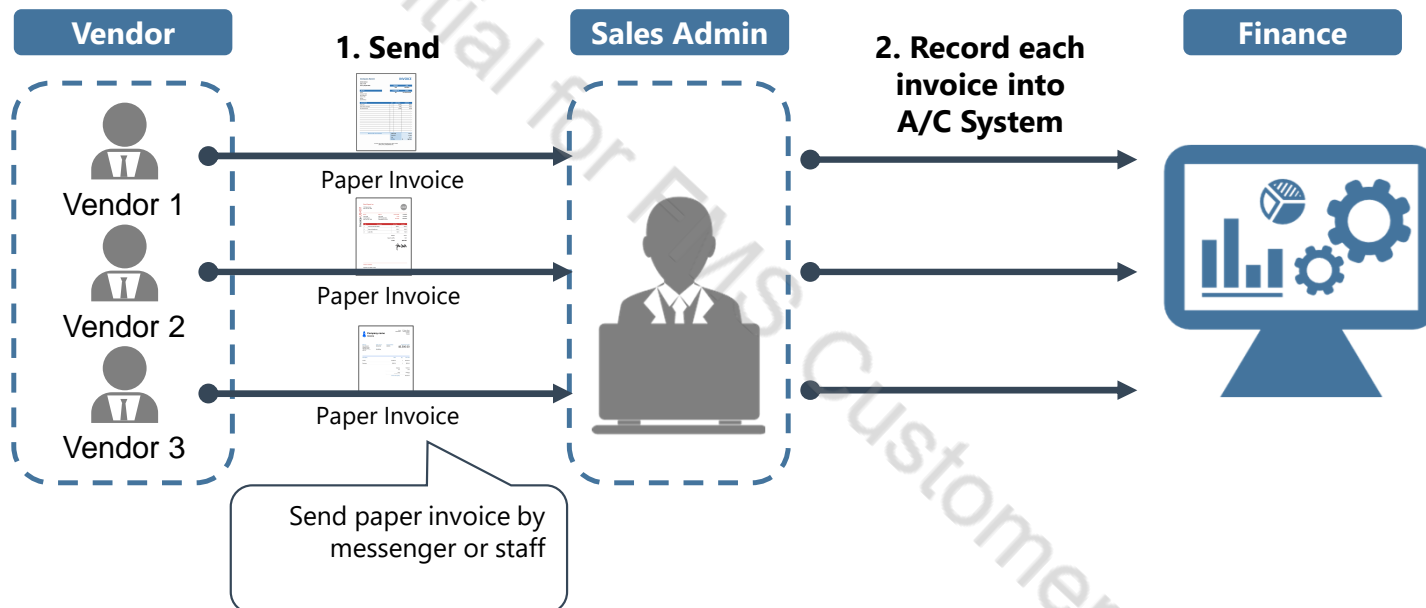


97% Workload Reduce! No More Human Error!

Case: Invoice Data

Operation

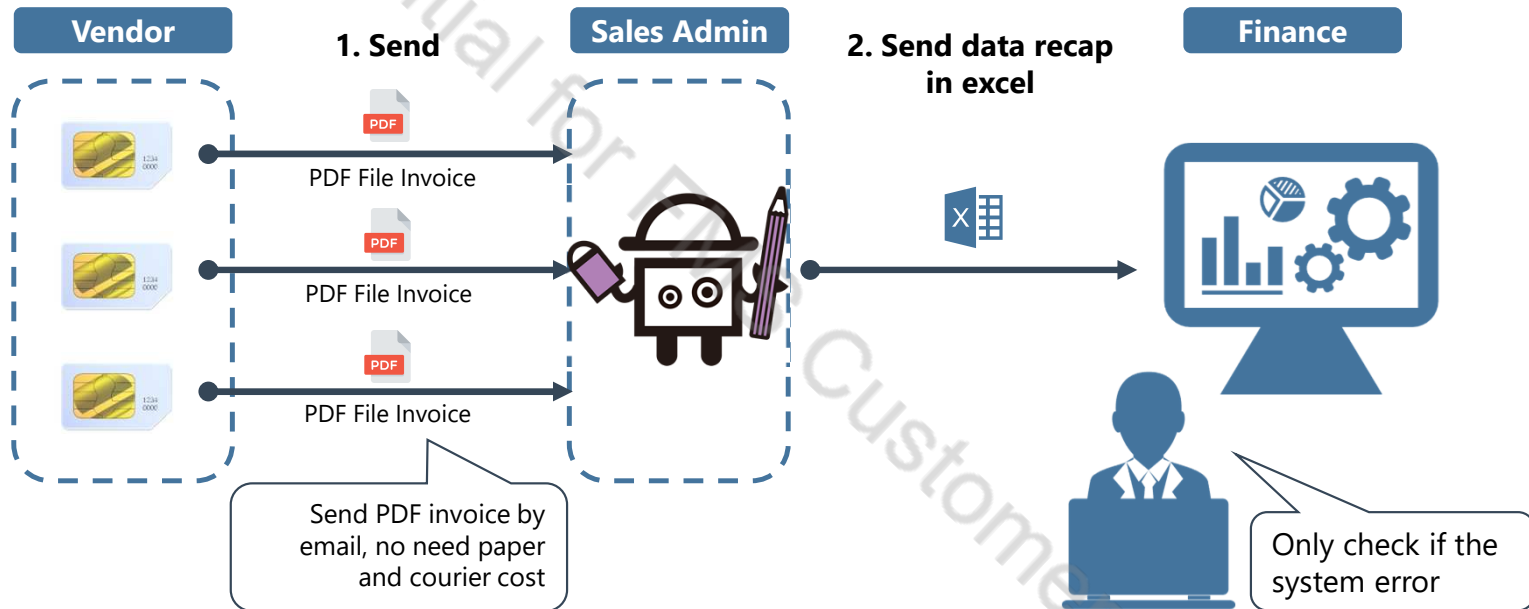
Recap invoice data from Hardcopy file to excel



Case: Invoice Data

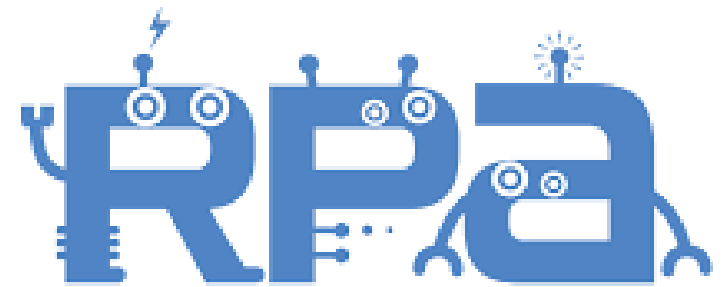
Operation

Recap invoice data from Hardcopy file to excel

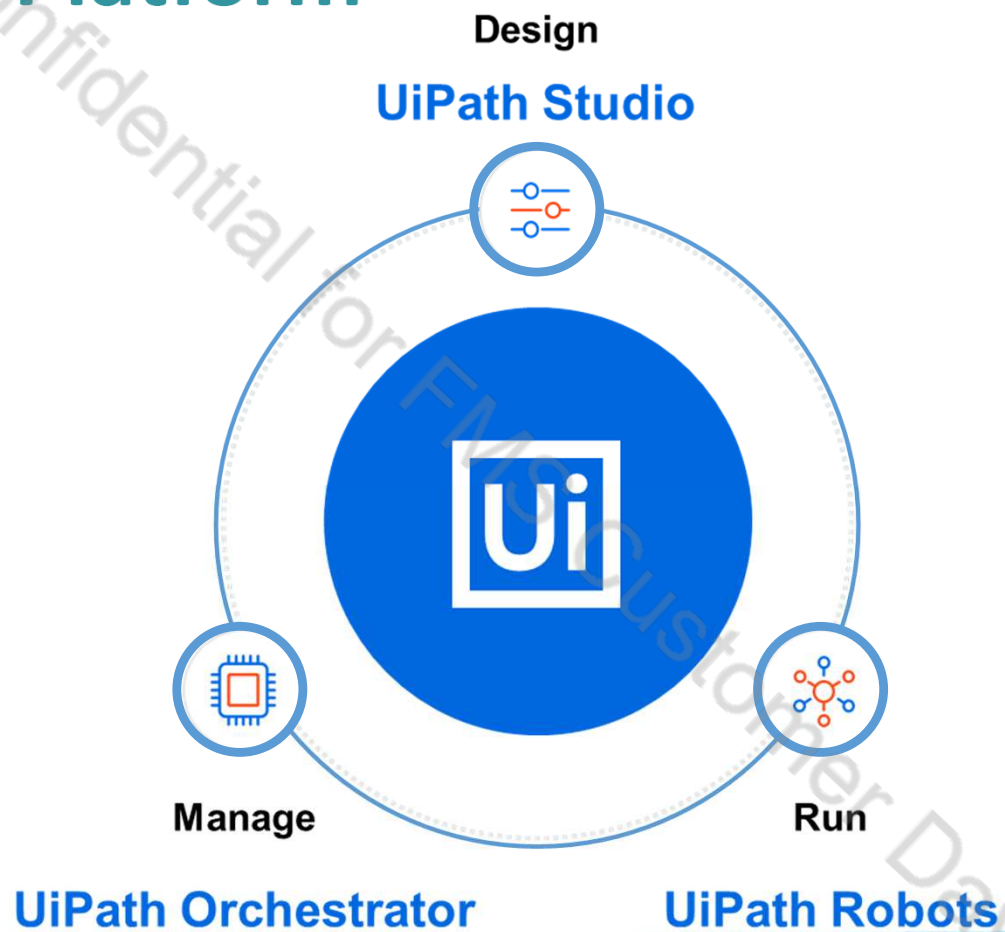


From 4Hour Workload become 30Mins! No Human Error

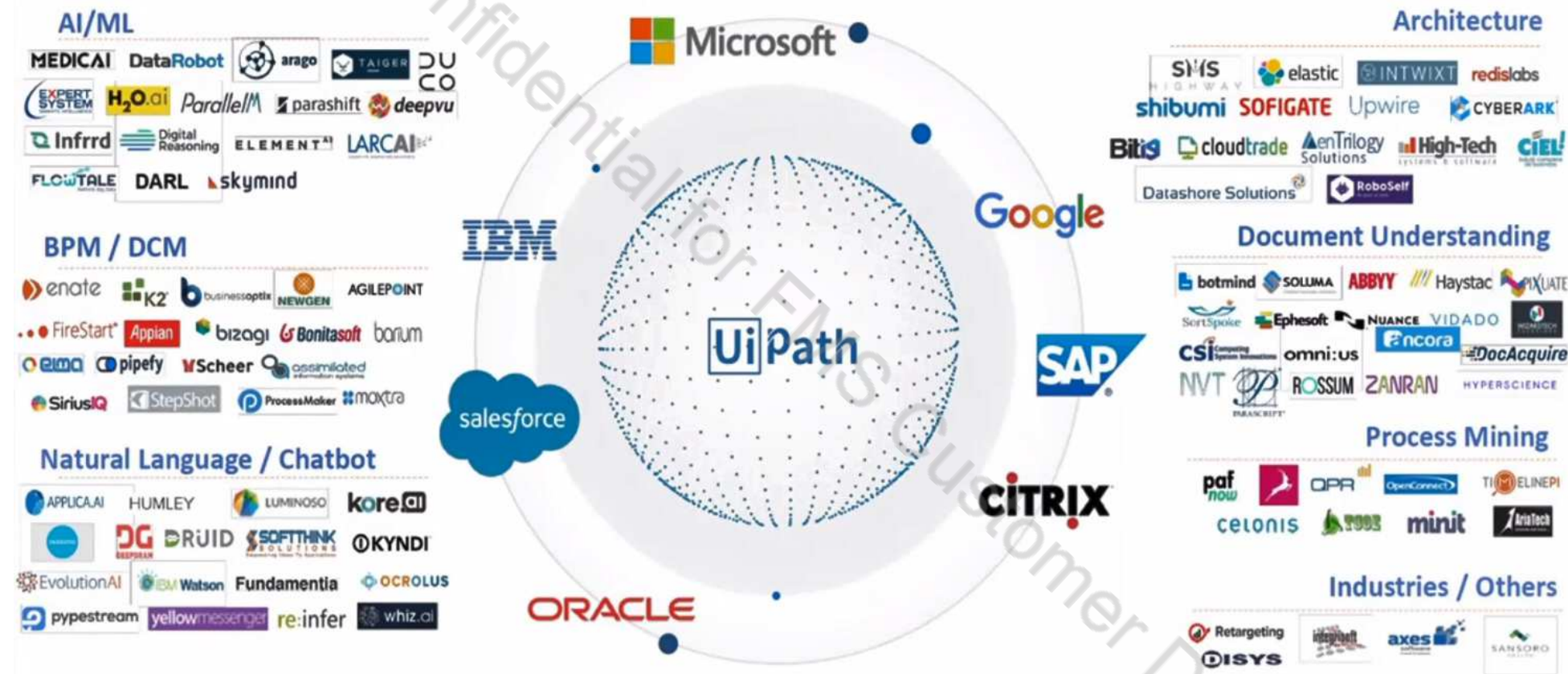
RPA Components & Structure



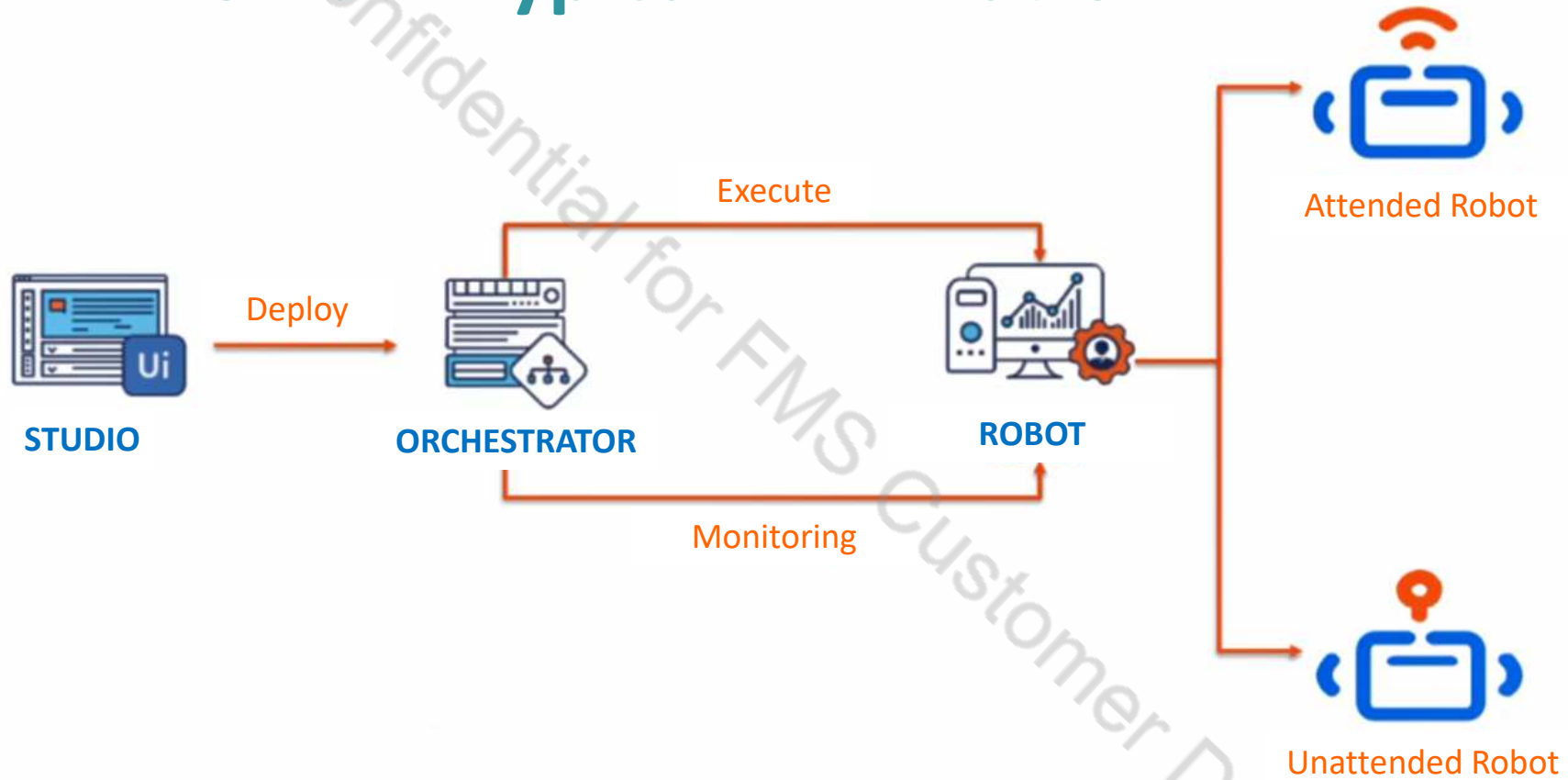
RPA Platform



UiPath Platform

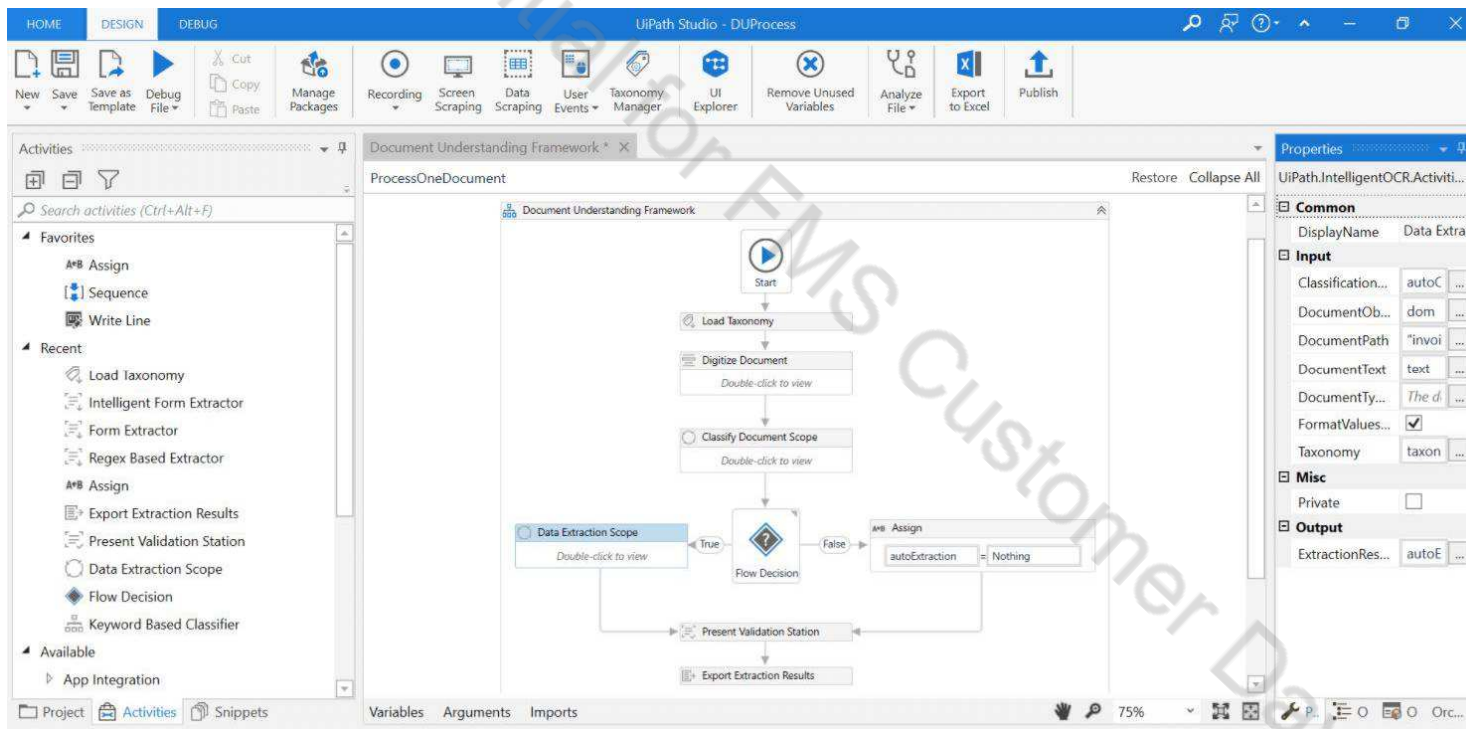


UiPath Typical RPA Platform



UiPath Studio

Flowchart-based modeling tool which support **no coding skills** to design Robotic processes



UiPath Studio

With a common foundation and dedicated activities sets for different coding skills, the Studio family of products offers everyone the ability to build their own automation.

	StudioX	Studio	Studio Pro
USER TYPE	Business user	RPA developer	Specialized developer
CODING SKILLS	No code	Basic programming knowledge	Advanced programming knowledge
OPPORTUNITY IDENTIFIER	Employee	Employee and COE driven	Employee and COE driven



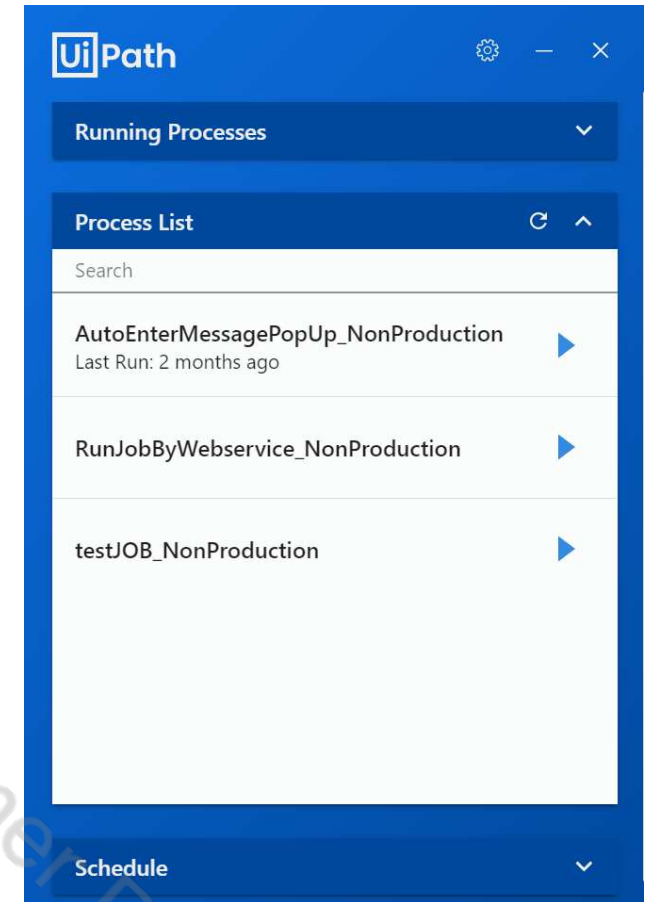
nsuasswangs
THE REVENUE DEPARTMENT



UiPath Robots

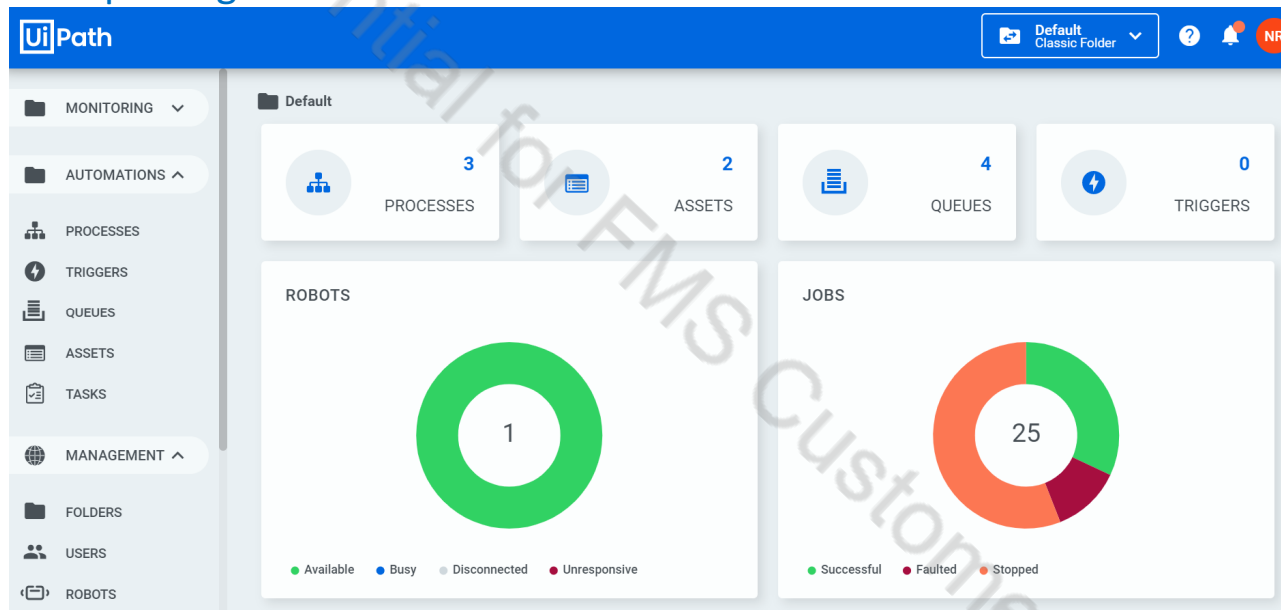
UiPath Robot runs the processes designed in UiPath Studio.

- **Attended Robot** (working only on human trigger) work side-by-side with employees to help them with daily work.
- **Unattended Robot** (self-trigger and work on their own) run independently to work on back-office tasks



UiPath Orchestrator

UiPath Orchestrator is a web-based platform that runs and manages Robots. It can deploy multiple Robots and monitoring and inspecting their activities.



On-PremiseS

Private Cloud

Public Cloud

UiPath Cloud



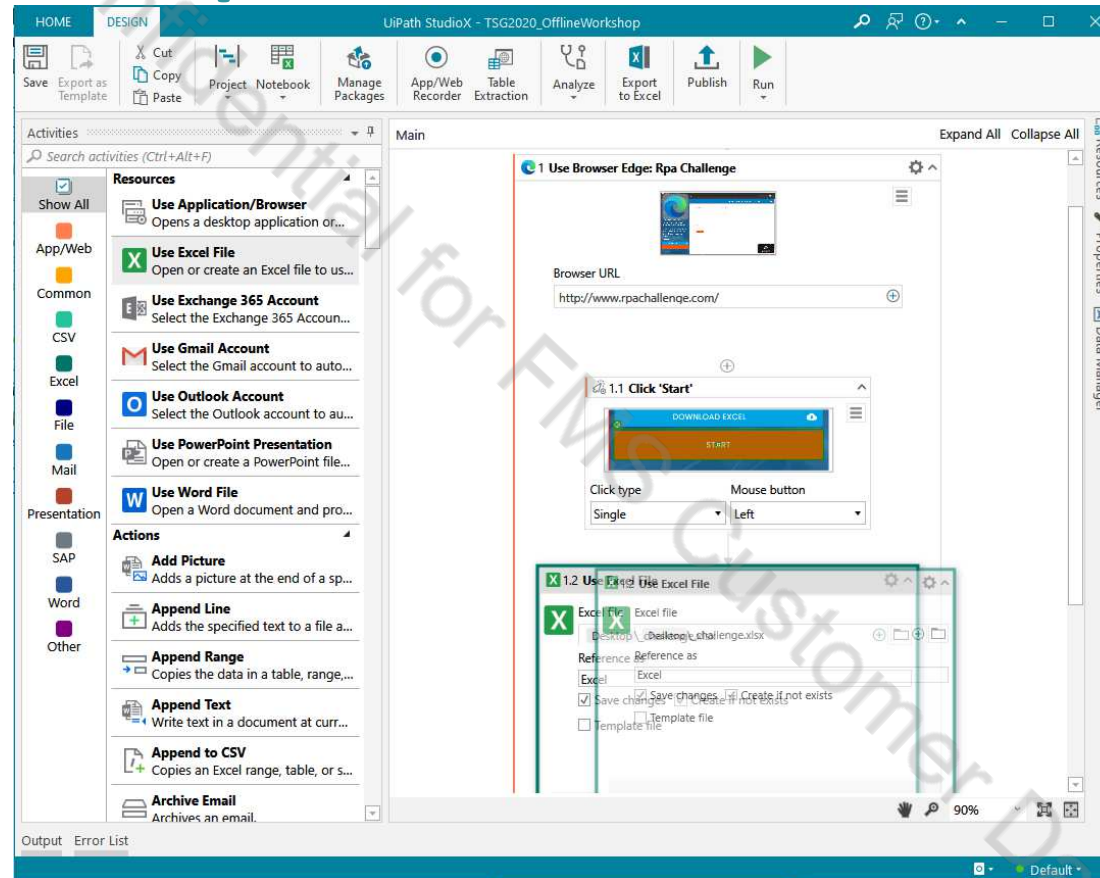
Developer Interface

The screenshot displays the UiPath Studio interface with the title bar 'UiPath Studio - DUPProcess'. The main workspace shows a workflow titled 'Document Understanding Framework' with the following steps:

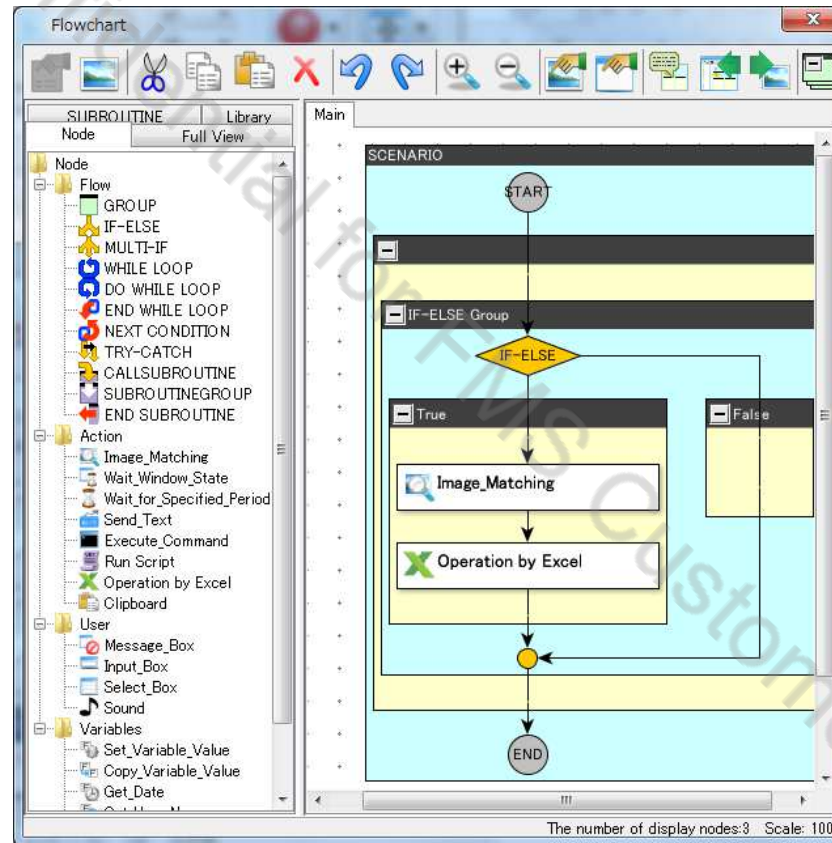
- Start
- Load Taxonomy
- Digitize Document (with a 'Double-click to view' tooltip)
- Classify Document Scope (with a 'Double-click to view' tooltip)
- Flow Decision (a diamond-shaped decision node)
- If the decision is 'True', it leads to 'Data Extraction Scope' (with a 'Double-click to view' tooltip).
- If the decision is 'False', it leads to an 'Assign' activity where 'autoExtraction' is set to 'Nothing'.
- Both paths converge at 'Present Validation Station'.
- The workflow ends with 'Export Extraction Results'.

The left sidebar shows the 'Activities' pane with 'Favorites' (Assign, Sequence, Write Line) and 'Recent' (Load Taxonomy, Intelligent Form Extractor, Form Extractor, Regex Based Extractor, Assign, Export Extraction Results, Present Validation Station, Data Extraction Scope, Flow Decision, Keyword Based Classifier). The right sidebar shows the 'Properties' pane for 'UiPath.IntelligentOCR.Activiti...' with sections for 'Common', 'Input', 'Misc', and 'Output'.

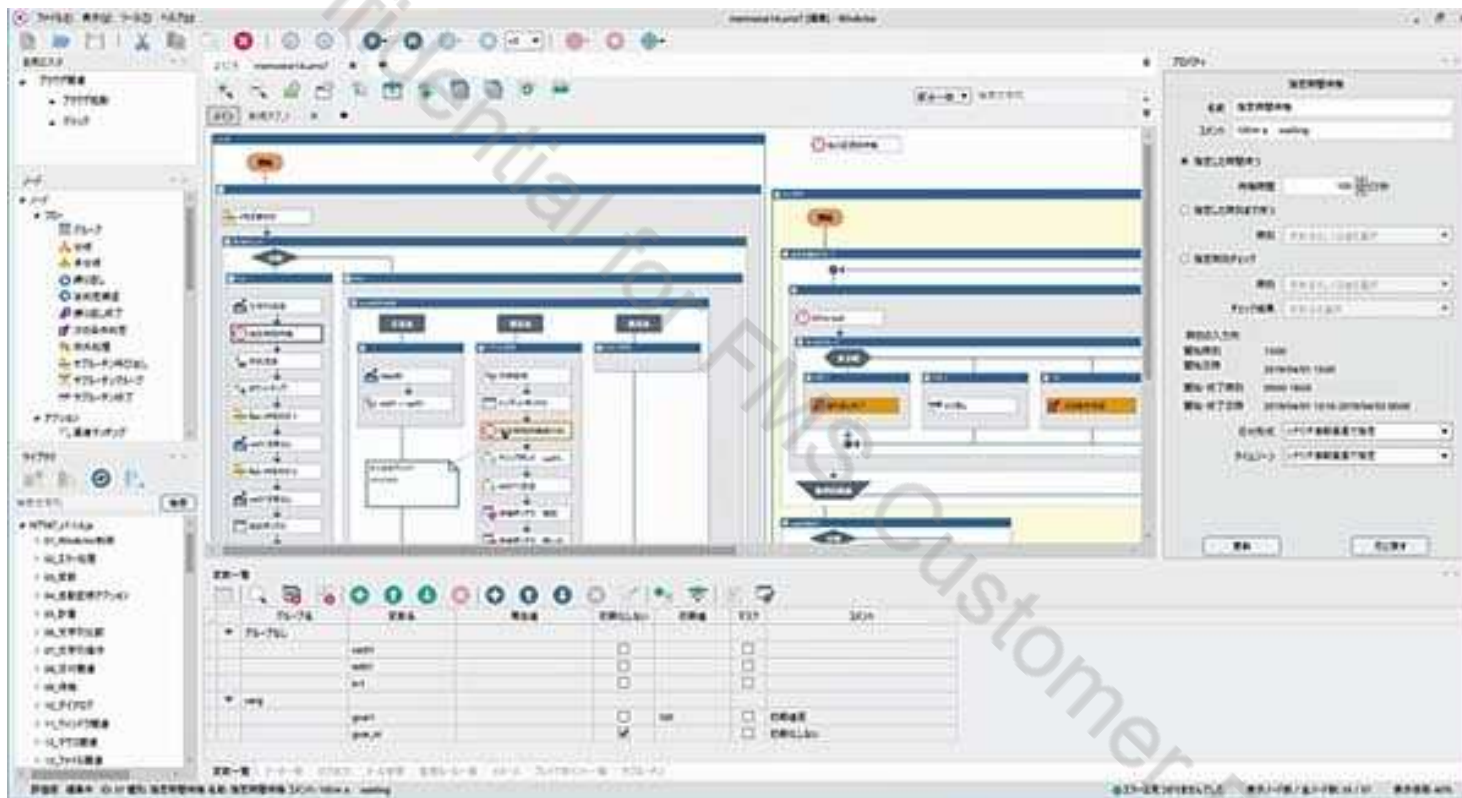
Developer Interface



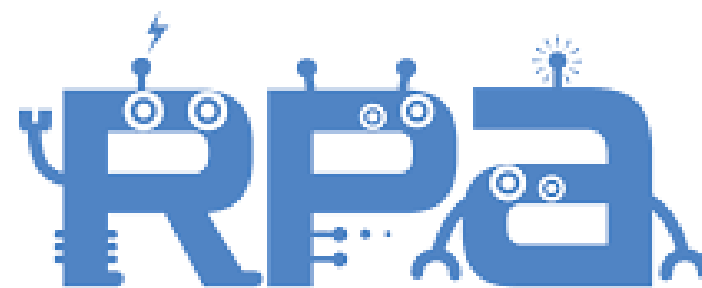
Developer Interface



Developer Interface



RPA Journey



When to Apply RPA

พร้อม Ready

คุ้มค่า Profitable



กรมสรรพากร
THE REVENUE DEPARTMENT



พร้อม - Ready

Process is Rules-based

เงื่อนไขการทำงานชัดเจนและแน่นอน

Process is Repeatable

เป็นการทำงานซ้ำๆ

Computerize Operation

ดำเนินงานด้วยคอมพิวเตอร์ได้

Digital Data

ข้อมูลเป็นดิจิทัล



กรมสรรพากร
THE REVENUE DEPARTMENT



WinActor®

คุ้มค่า - Profitable

High Volume (scalability)

ใช้เวลาทำมาก

Interacting with several different applications

เชื่อมต่อกับหลายระบบ

Can be done outside normal working hours

ทำนอกเวลางานได้

There are better things for your employees to do

ผันเวลาที่ robot ช่วยไปทำอย่างอื่นได้



กรมสรรพากร
THE REVENUE DEPARTMENT



THAILAND
BOARD OF
INVESTMENT



WinActor®

Thank you



nsuasswangs
THE REVENUE DEPARTMENT



THAILAND
BOARD OF
INVESTMENT



sage
WinActor®